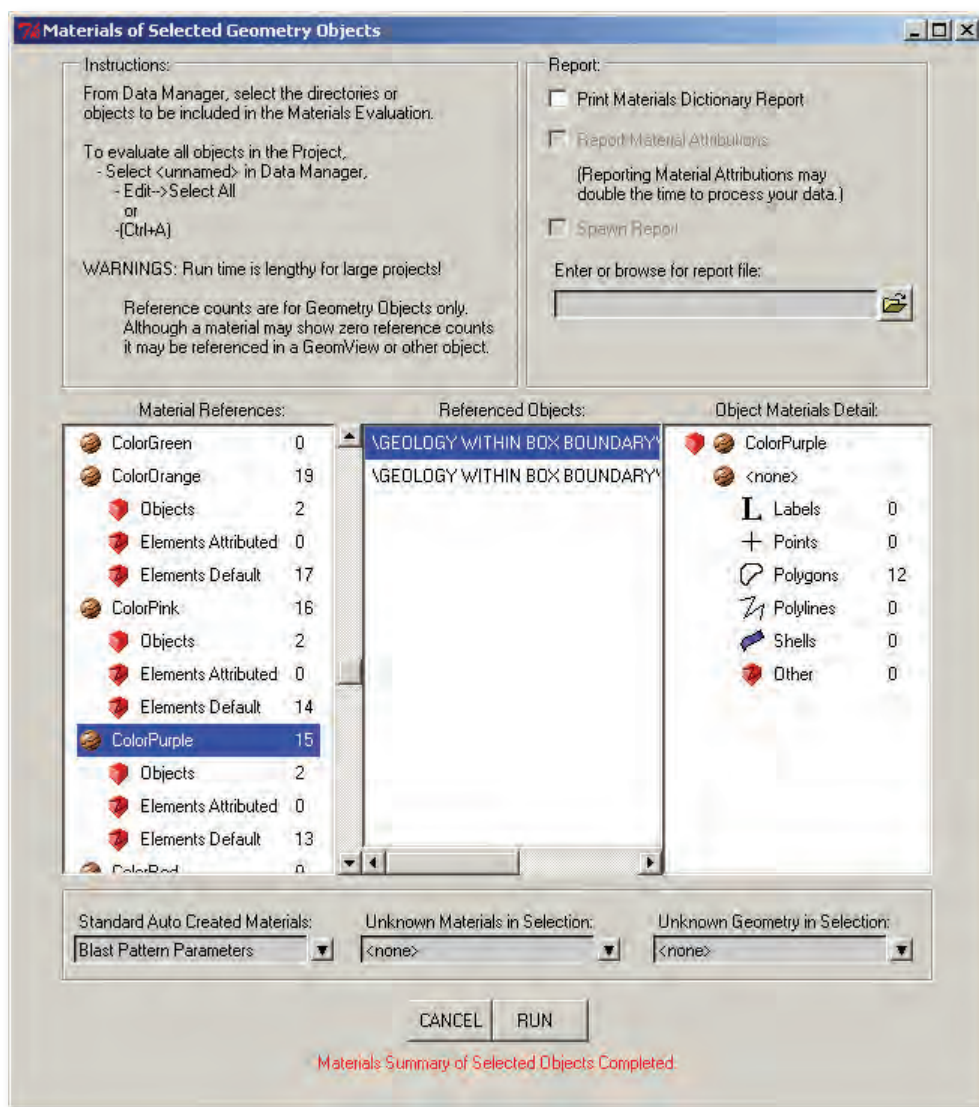


Tip of the Month

To create a list of all the materials used in your project plus the materials attributed to the objects or folders in your project, use the standard MS3D embedded script, **em-materials.pyc**. This script is located in your **%medexe%\scripts** directory and was included on the 2007 Update CD.

This script is run from within MS3D via **File menu | Scripts | Run Script...** . Helpful instructions are included on the script's dialog.



To use this script, highlight the objects of interest in the **Data Manager** in MS3D then click on the **RUN** button at the bottom of the script's dialog. In the script dialog itself (shown above), highlight a material from the list under the **Material References:** column. Notice how many places where the specific material is used. For example, in the picture above, the ColorPurple material is used 15 times in this project.

The MineSight® objects in which the selected material is used are displayed in the **Referenced Objects:** column. Finally, click on one of the referenced objects and the details about this object will be displayed in the **Object Materials Detail:** column.