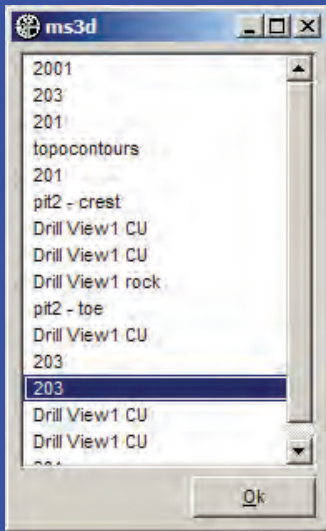


Tips of the Month:

The Nearest Element List

Use Nearest Element List Dialog

When you have a lot of data open in a Viewer, it can be difficult to choose a particular element to query or select for editing. Located at the bottom of the **Selection** menu, you can toggle **ON** the option to **Use Nearest Element List Dialog**. Then in a viewer crowded with data, click close to the element you want to select and a list of the elements located closest to the click point will be displayed.

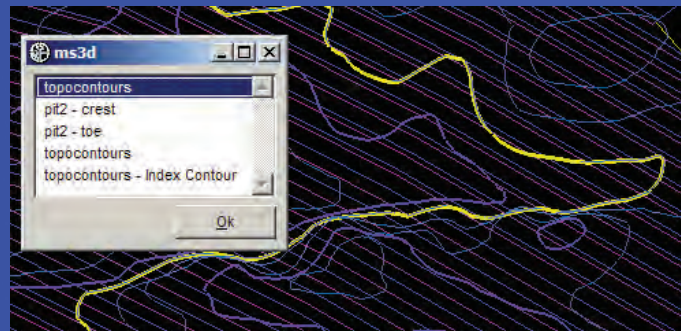


The screen capture on the left shows the **Nearest Element List** with multiple objects that are open in the viewer located close to the spot the user had clicked with the mouse.

Choose an element from the list and it will be highlighted in the viewer. If that was not the correct element, you can pick again from the list until you find the element you want.

In the **Nearest Element List** dialog, the elements are listed using the format, "Object name - Attributed name". The tolerance for choosing the elements for the list is based on a few pixels and is done programmatically.

The screen capture on the right shows the list with two objects, "pit2" and "topocontours" and some of the elements have **Attributed Names**. The selected element on the list is highlighted in the viewer.



(continued on page 5)