

# TIPS

from



## Tech Support

# Restarting in Pit Expansion

This article covers the procedure for restarting your pit expansion from the point at which you stopped in a previous pit expansion session.

Create a new pit expansion object as you normally would and carry out some levels of expansion.

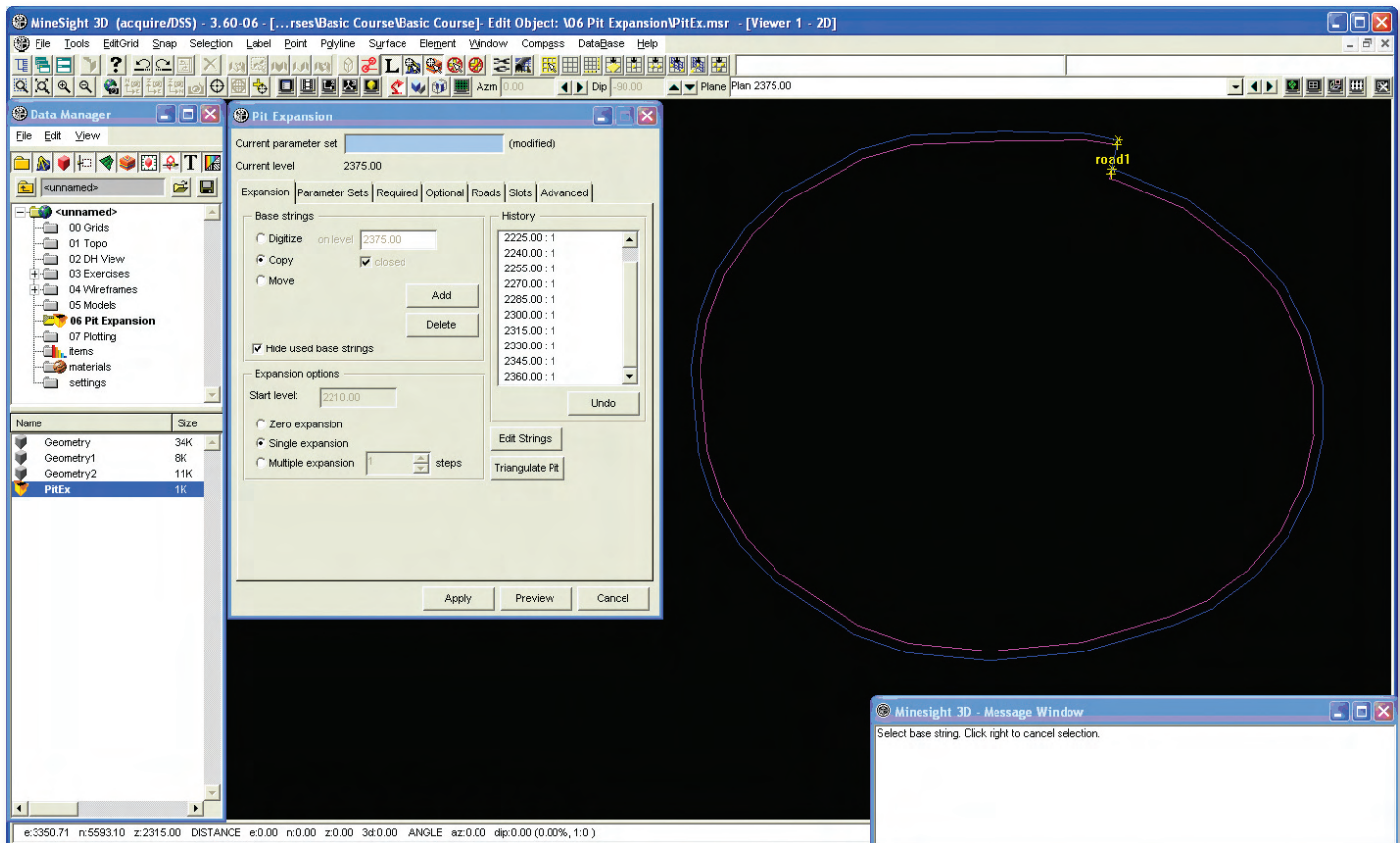


Figure 1

If you now had to leave the **Pit Expansion** tool, there are a few things you must do. First, save your **Parameter Set** using the **Save** button on the **Parameter Set** tab (Figure 2). Under the **Advanced** tab, make sure to select an option to **Restore previous pit state** (Figure 3). We recommend keeping the default setting, **Ask each time** so that the next time you open the **Pit Expansion** tool it will ask if you want to load the previous state. Two other options are to load without asking or to ignore the previous state. If you choose the latter, the expansion will not start.

(continued on page 10)

(Restarting in Pit Expansion continued from page 9)

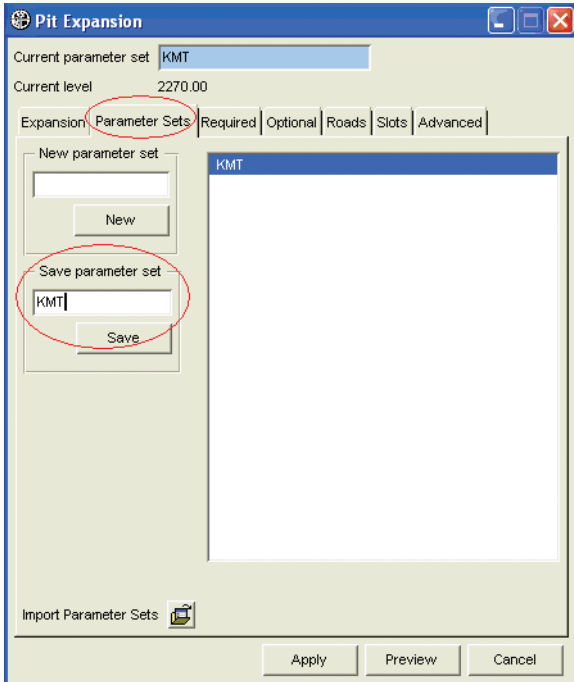


Figure 2. Use the **Parameter Set** tab to save the current set.

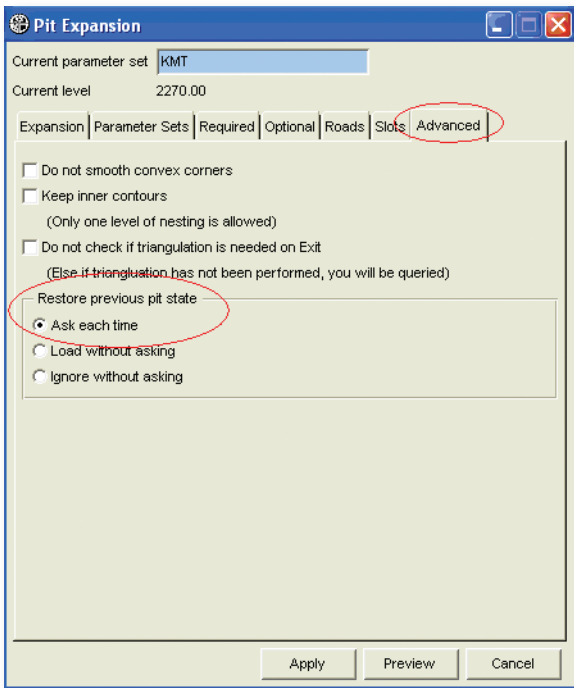


Figure 3. **Restore previous pit state** options on **Advanced** tab.

You can now exit **Pit Expansion** (and no, you do not need to triangulate your pit now).

The next time you open MineSight® or are planning on recommencing **Pit Expansion**, set the pit expansion object to edit. Now open the **Pit Expansion** tool and a notice will appear asking if you want to load the previous pit state. Select **Yes**.

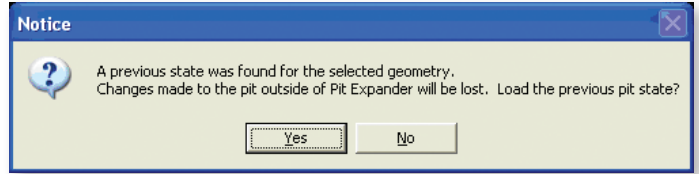


Figure 4. **Load previous pit state** notice is shown when option **Ask each time** is selected as a restore previous state option before exiting pit expansion (the default option).

Having now opened the **Pit Expansion** tool, there is no need to restart **Roads** and/or **Slots**. You just set up the number of expansions you wish to do and continue the expansion. Figure 5 shows a preview of a single expansion with a road ramp after recommencing the pit expansion. Figure 6 shows a slot before exiting pit expansion and Figure 7 shows a preview of a single expansion with the continuation of a slot ramp.

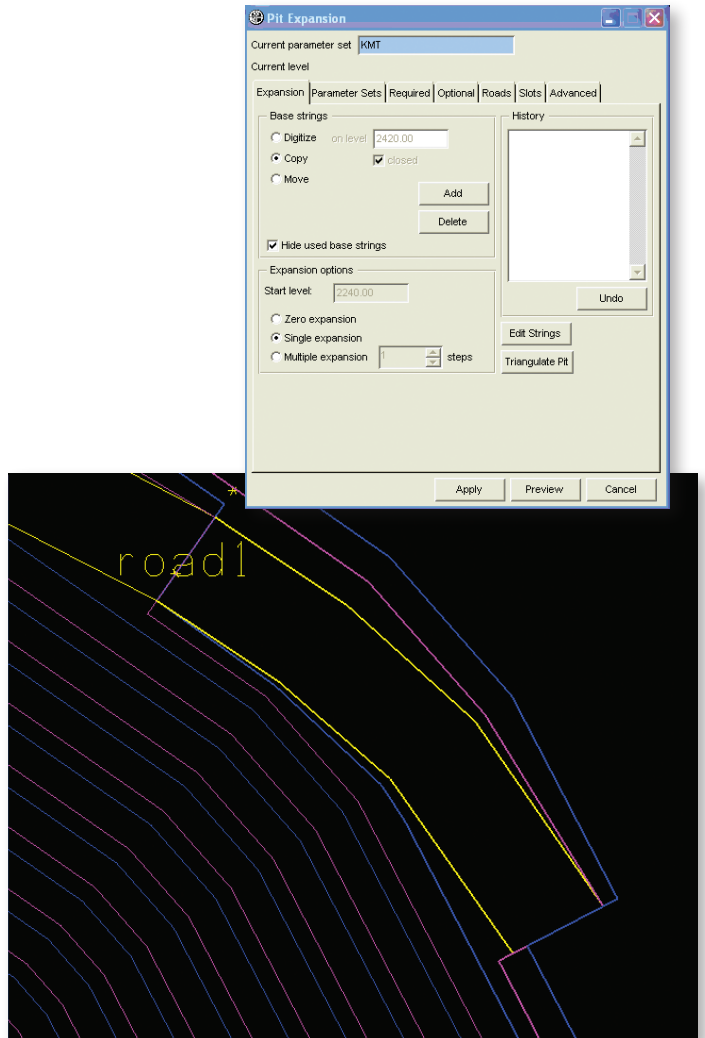


Figure 5. Preview of a road after restarting expansion.

(continued on page 11)

(Restarting in Pit Expansion continued from page 10)

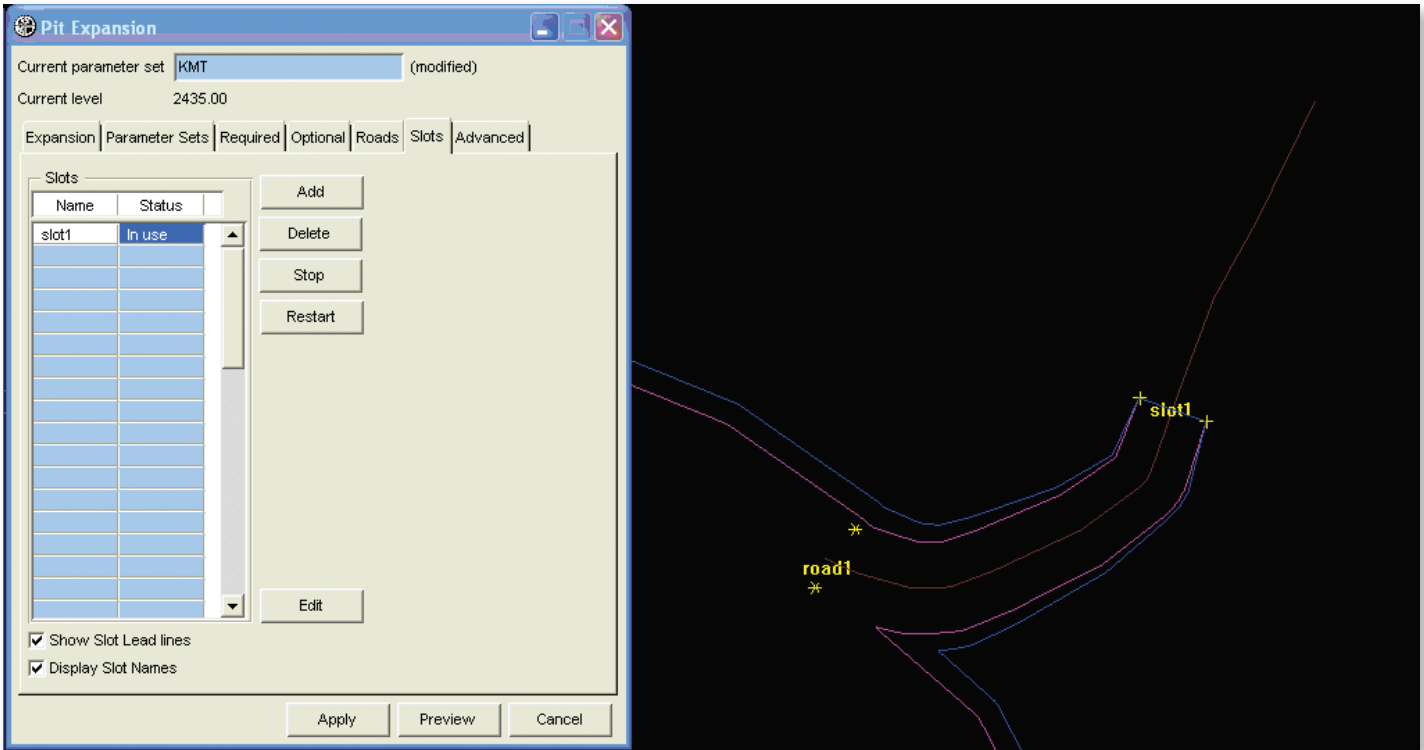


Figure 6. Slot before exiting pit expansion.

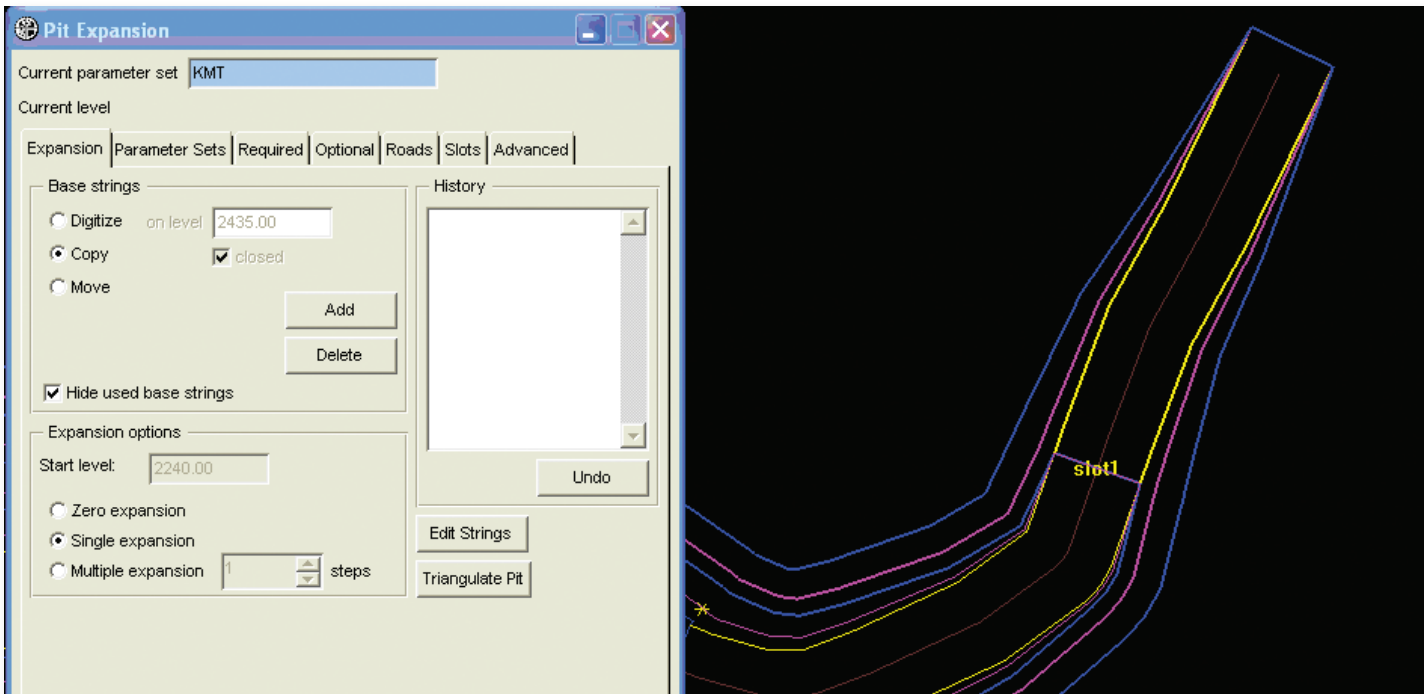


Figure 7. Preview of a slot after recommending the expansion.

To reiterate the main points: make sure you saved a **Parameter Set** and correctly set the **Restore previous pit state** option on the **Advanced** tab.