

TIPS

from



Tech Support

Synchronize Plan View with a Section View in a Plot Layout

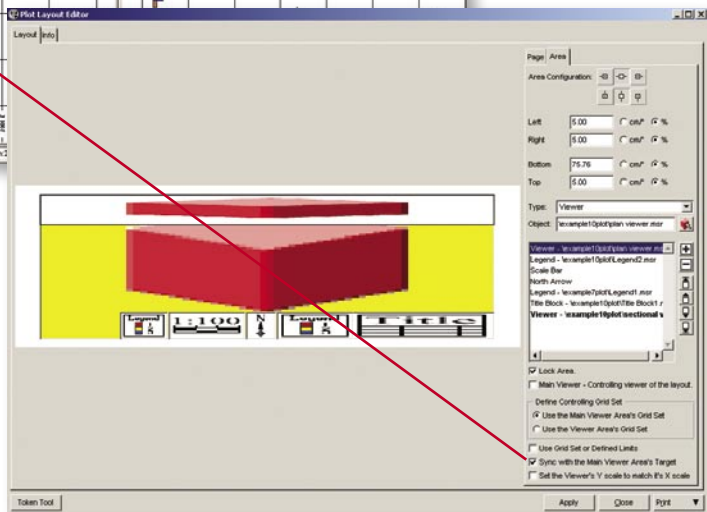
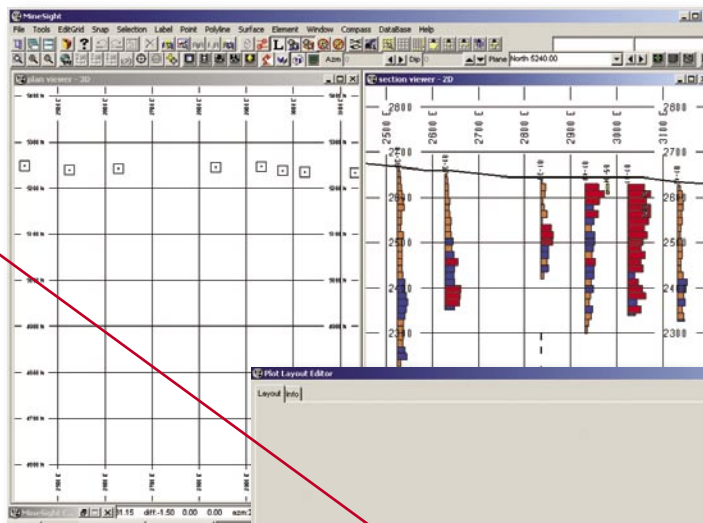
Assuming that you want to simultaneously plot a 2-D section and a corresponding plan view of the area defined by the section, the Plot Layout feature **Sync with the main Viewer Area's Target** can be used as long as the plan view is set to the right direction.

In the example at right, we want to display some drill holes along with topography in East-West sections and just the drill hole collars of the section in a plan 3-D view. The data were set up as follows:

- Two viewers are open.
- An East-West grid set is attached to both viewers.
- A set of vertical drill hole grade strips is displayed along with triangulated topography and collar points generated by the drill holes.

Set up for 2-D view

- 2-D mode is used.
- 2-D display volume for drill holes from the drill hole properties is set to desired width.



Set up for plan view

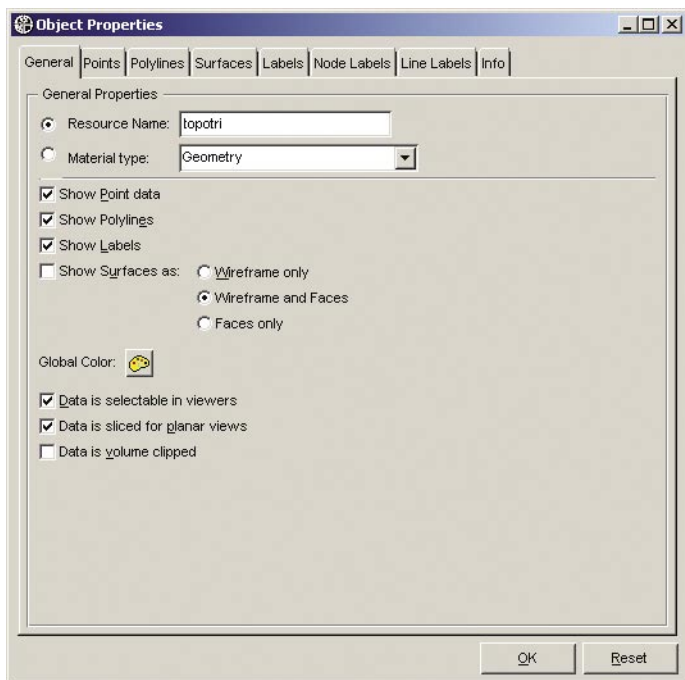
- 3-D mode is used with an azimuth of 0 degrees and a dip of -90 degrees.
- Volume clipping equal to the drill hole view 2-D projection volume is applied. This way only the collars of the drill holes displayed in the 2-D view will be plotted in the plan view.

(continued on page 9)

(Synchronize Plan View with a Section View in a Plot Layout continued from page 8)



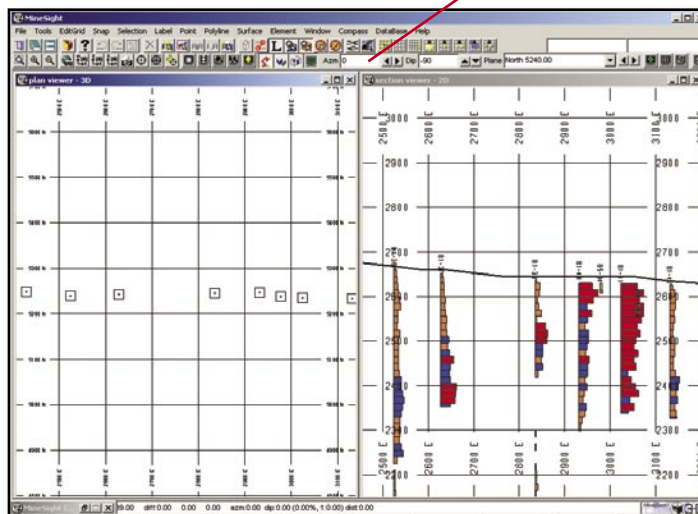
- **Show Surfaces as** has been deactivated for the triangulated topographic object. This way triangulate topography does not show up in the 3-D view.



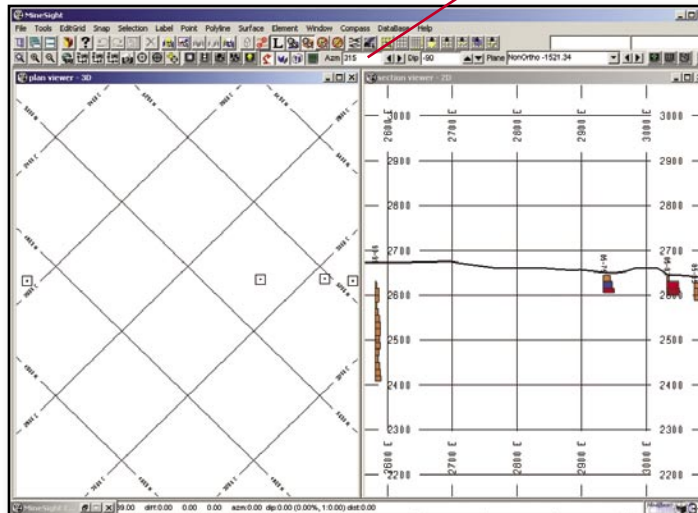
Keep in mind that for the viewers to be synchronized correctly, the azimuth of the 3-D plan viewer should be set to the direction of the line of sight defined by the 2-D section viewer.

For example:

If you plot EW vertical sections looking North, you need to set the plan view to azimuth of 0 degrees and a dip of -90 degrees.



If you plot 45 degrees non-orthogonal vertical sections from SW to NE looking North-West, you need to set the plan view to azimuth of 315 degrees and a dip of -90 degrees.



The following table includes more examples (we assume vertical sections in all cases, therefore the dip of the plan view is always -90 degrees).

(continued on page 10)

(Synchronize Plan View with a Section View in a Plot Layout continued from page 9)

SECTION VIEWER ORIENTATION	PLAN VIEWER AZIMUTH
EW looking North	0
EW looking South	180
NS looking West	270
NS looking East	90
SW45NE looking NW	315
SW45NE looking SE	135

To set up your plot layout (assuming that you have already set up a series of 2-D section plots), do the following:

- Open plot layout.
- Click on the yellow viewer.
- Change it from current viewer to section viewer.
- Add one more segment to the plot. Change new segment to type viewer. Select (using the object window) plan viewer as the second viewer.
- Adjust size so it is located at the top of the first viewer.
- Click on the sync option (while you are setting up the plan viewer area tab).
- Print a series of sections. Plots should look like in the following previews.

