

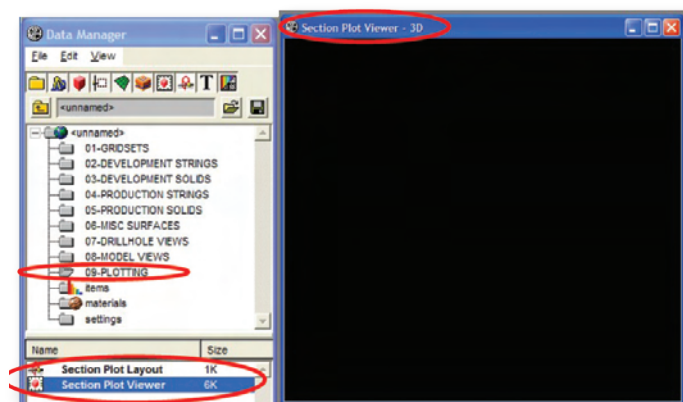
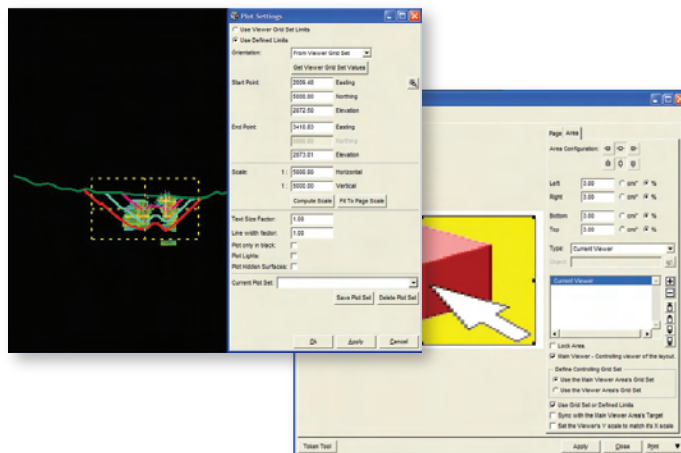
Tip of the Month

Creating Repetitive Plots in MineSight® 3-D

Creating repetitive plots, plots that must be re-plotted on a regular basis, is a common requirement at most mines. Whether it is simple daily production plots of the pit or more complex plan and section plots of geology information, the MineSight® 3-D plotting tool can produce the required results. This article will take you through the simple steps to successful plotting in MineSight® 3-D.

Creating a Plot Viewer

The first step is to create Viewer windows for each plot window. It is advisable to designate a folder in the **Data Manager** for all your plots so they are easy to find and repeat.



Create a new Viewer window and rename it something that describes the plots to be produced. It is a good idea to carry this naming convention through to the **Plot Layout, Legend, and Title Objects** as well.

Once you have created a new Viewer window, set the required Grid Set (Edit Grids and Fence Geometries can also be used) to the Viewer. This Grid Set can be one of the site standard Grid Sets or can be a special plotting Grid Set that is stored in the Plotting folder.

Next, load the data to be plotted. There is no need to copy this data to the Plotting folder as the **MineSight® Resource Map** we will be using stores a link to the files loaded on the screen.

Setting up the Plot Layout

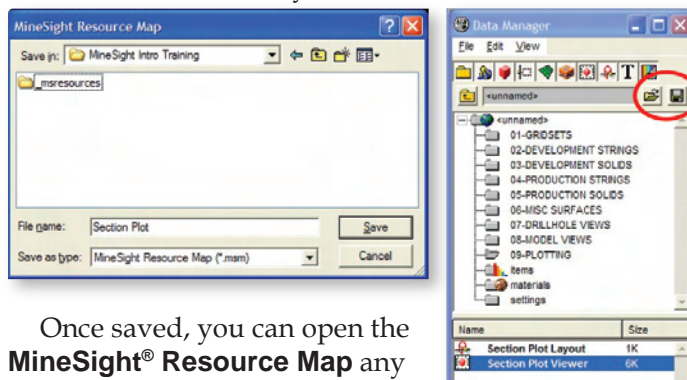
Create a new Plot Layout object and set up the panels as you normally would.

Be aware that the plot will be used over and over again, so make sure the plot extents set covers the required area now and in the future. However, should it be necessary, it is easy to reopen the plot settings and alter the plotting extents.

Creating a MineSight® Resource Map

MineSight® Resource Maps (.msm files) are what allow us to create repetitive plots. They are binary files that store the Viewer name, its orientation settings (2-D or 3-D), the Grid Set (Edit Grid or Fence Geometries) attached to the Viewer, and the Geometry Objects open in the Viewer.

To create a **MineSight® Resource Map** file, click the **Save** icon near the top of the **Data Manager** (see picture) and name the file. For consistency, I prefer to name the **MineSight® Resource Map** file the same as the Viewer and Plot Layout.



Once saved, you can open the **MineSight® Resource Map** any time. This will reopen the Plotting Viewer in the correct orientation and all the data associated with the plot. Then all you have to do is open the Plot Layout object and Print.

Note: This method relies on not changing the name or location of files to be plotted or the spatial coordinates to be plotted. Therefore, you may need to overwrite existing files as new data becomes available rather than create new objects. If you do need to add new objects to the plot you can always load them to the screen and overwrite the **MineSight® Resource Map** file.