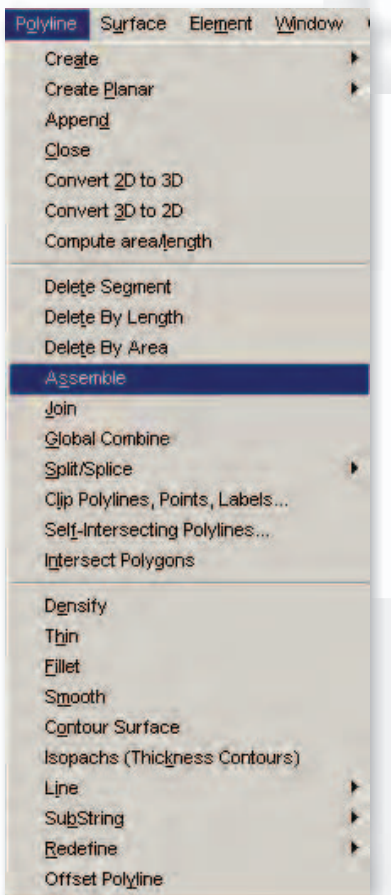




# Polyline | Assemble Tool

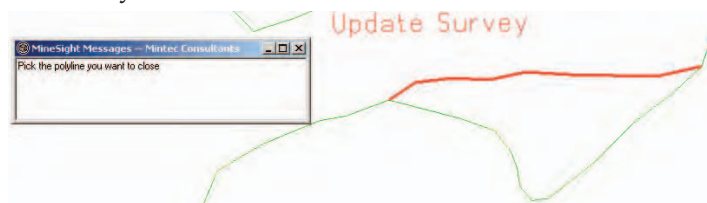
The MineSight® 3-D **Polyline | Assemble** tool can be used effectively by both geologists and engineers to enhance the convenience of certain types of polyline editing functions. You can create a polygon from the current topography contours with just a couple of simple mouse clicks. The polygon can then be used to get reserves using MineSight® Interactive Planner (IP) or other MineSight® Compass™ programs. Among other uses, geologists can ensure that various geologic units are not overlapping when digitized in MineSight® 3-D.

The tool can be accessed from the main MineSight® 3-D menu through **Polyline | Assemble**.

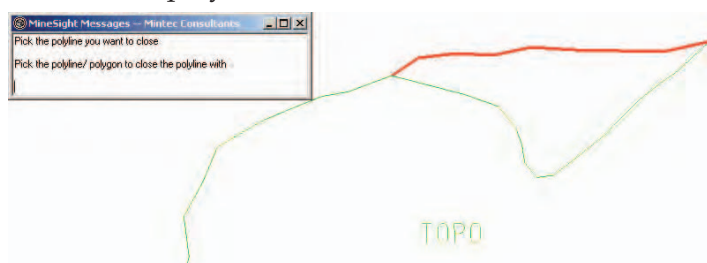


## Engineering Example

Creating a polygon from updated topography contours is much easier and more convenient using the **Polyline | Assemble** function. After importing the updated topography lines (toe, crest, etc.), select the newly imported polylines. Go to **Polyline | Assemble** and choose one of the selected lines as the line to close. Note: The line “to be closed” must be selected for editing, while the line to be used as the closing boundary can be either selected or not selected.



Select the boundary polyline against which to close the selected polyline:



The result is a new polygon following both lines, honoring all of the points on the original lines.



(continued on page 6)

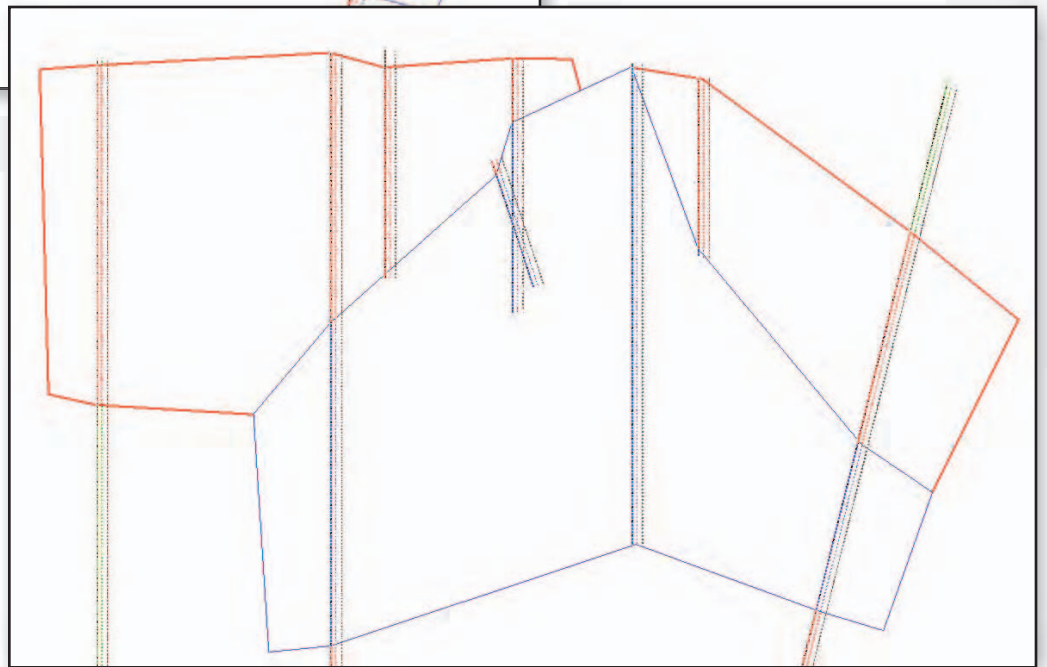
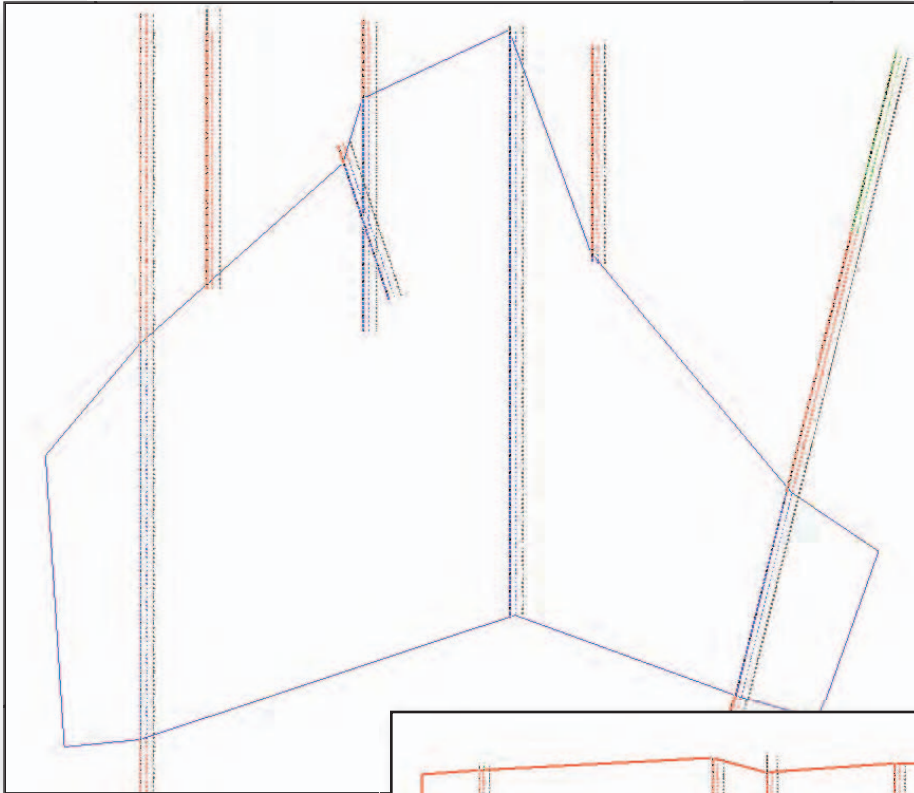
(Polyline | Assemble Tool continued from page 5)

The new polygon can be used to get reserves, or to define a surface area for any other subsequent requirements.

### Geology Example

The geology can be digitized in sections or plan. MineSight® currently has a number of tools available for geologic interpretation. The **Polyline | Assemble** tool will ensure the interpreted geologic polygon contacts are coincident and do not overlap or create gaps between the interpretations.

The polygon of Rock Type 1 (below) was digitized based on geologic interpretation.

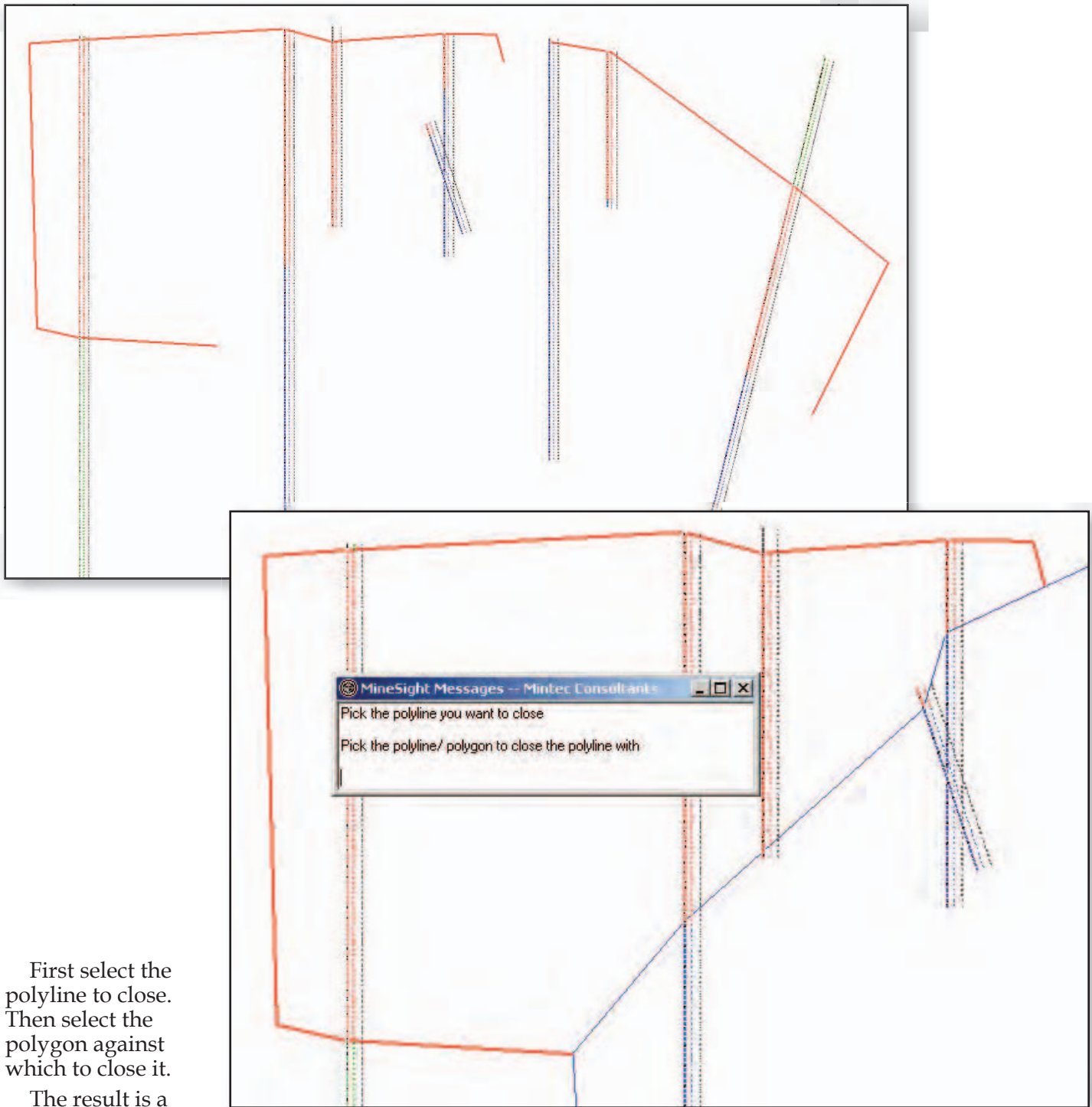


Then a second Rock type (shown on the right) was digitized based on drillhole data.

(continued on page 7)

(Polyline | Assemble Tool continued from page 6)

The second set of lines are open and the **Polyline | Assemble** tool can be used to close the polylines against the first Rock type polygon.



First select the polyline to close. Then select the polygon against which to close it.

The result is a new polygon (Rock Type 2) that now follows the exact boundary of Rock 1. This is a great method to ensure both lines are coincident.

In conclusion, the **Polyline | Assemble** tool allows you to conveniently use an existing polyline to bound a portion of a new polyline, or to use two existing polyline portions to create a new polygonal outline that honors all of the points of the original polylines.

If you have any questions regarding this or any other tool in MineSight® 3-D, do not hesitate to call or E-mail Mintec Technical Support at [TS@mintec.com](mailto:TS@mintec.com).