

TIPS

from

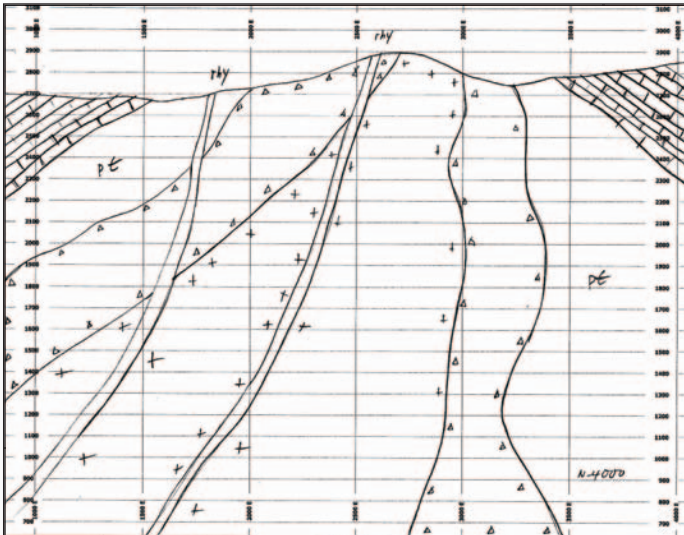


Tech Support

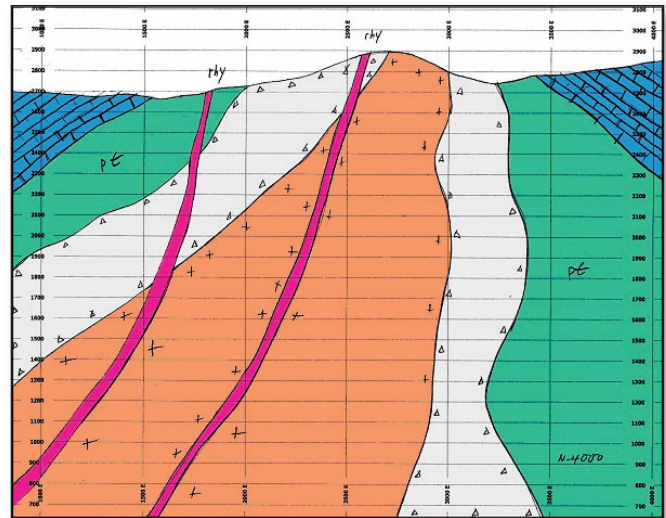
Applications of the Surface Texture Tool

This is a quick and efficient way to transfer hard copies of maps, sections, etc., into MineSight® for immediate use. These field mapping sheets can be at any scale and may represent planar or sectional views in any orientation.

The process starts with scanning the field sheets and saving them as images in JPEG format.



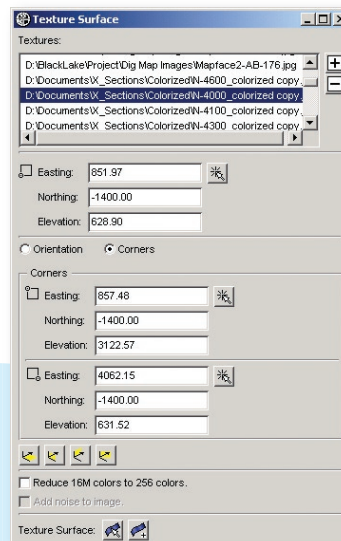
Then, using any graphics editing software, the JPEG images are cropped along known coordinate lines if in plan view, or along known coordinates and elevations if in cross-sections. The general idea is to assign measured, true, field survey coordinates and elevations to each of the four corners of the JPEG image. It is very important that the x, y, z of the four corners of the JPEG image match the coordinates and elevations of the region covered by the JPEG image. Colors can be added, if desired, using any graphics editing software.



Store the JPEGs to be used in a separate folder.

Operations Using the Surface Texture Tool

In MineSight®, replicate the original outlines of the JPEG images. Create a grid matching the orientation of the mapped face. On the grid, digitize a polygon with boundaries matching the easting, northing and elevation of the four corners of a specific JPEG image. Triangulate the polygon to create a plane.



Set the Snap option to Point Snap. Bring up the Texture Surface tool in MineSight®.

Retrieve the JPEG image by clicking on the Plus icon and navigating to the folder containing the JPEG images. Select the proper JPEG image.

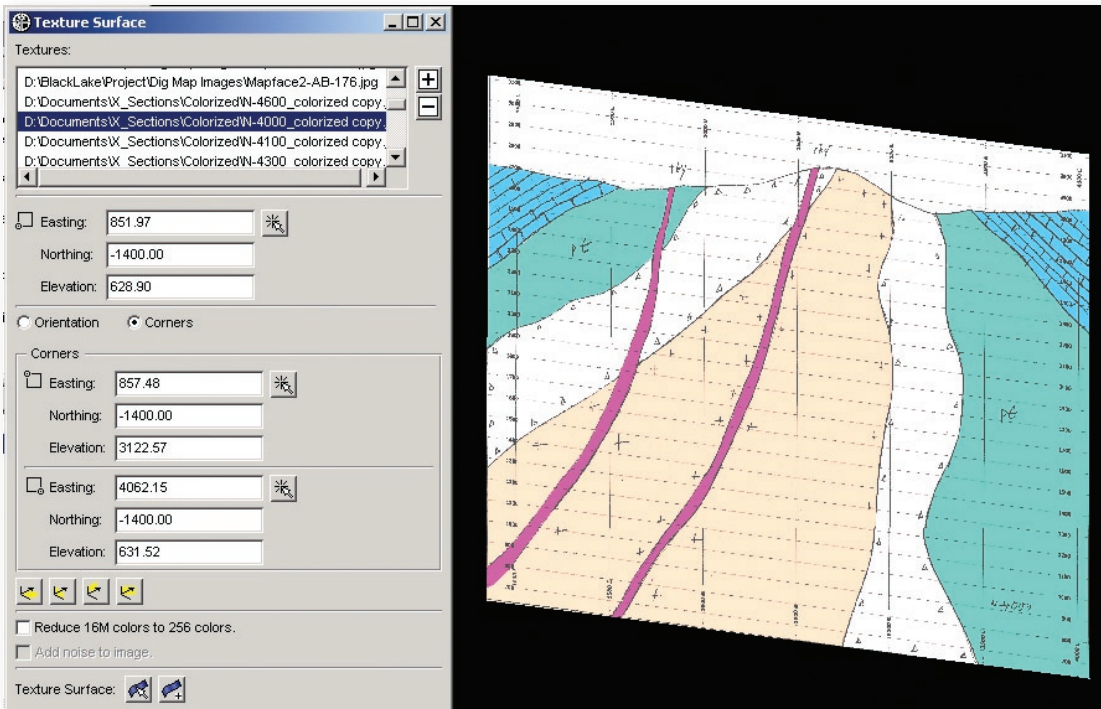
Click to place a mark on the small, circular corners window to have the option of selecting three corners of the plane to attach the JPEG. Click

(continued on page 5)

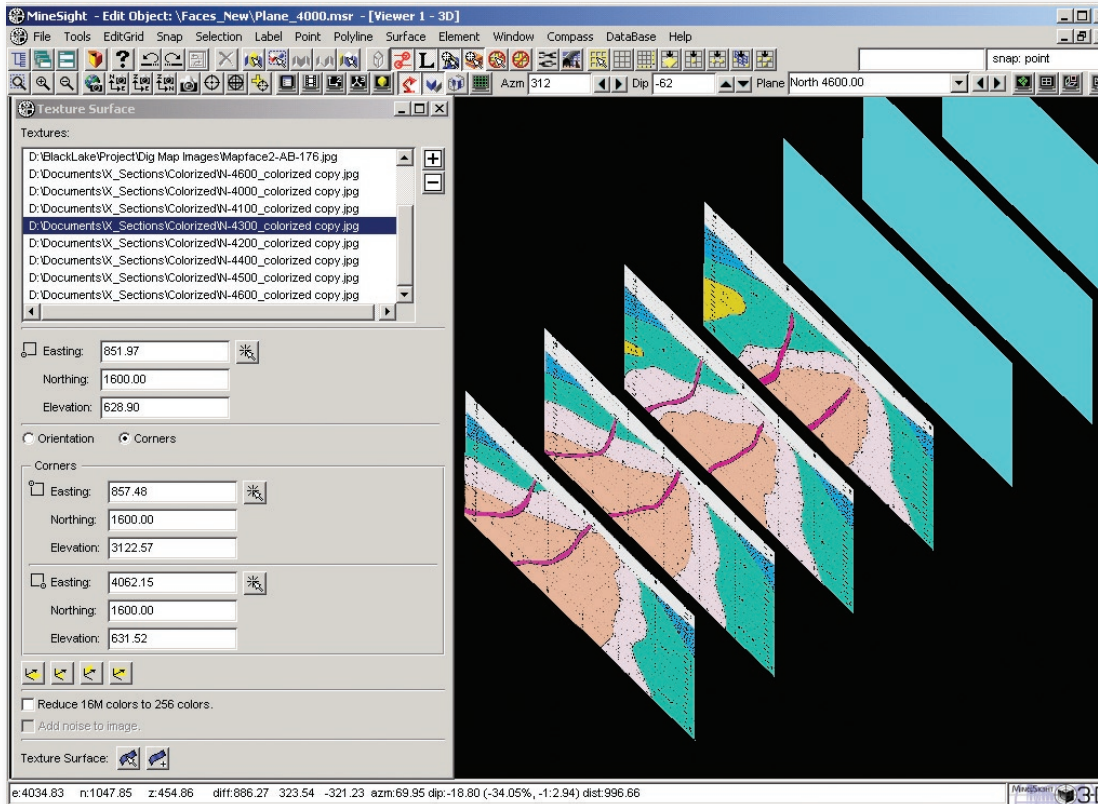
(Applications of the Surface Texture Tool continued from page 4)

on the Easting selection icon and on the corresponding SW corner of the plane (notice the small rectangle with the tiny circle on the SW corner). Similarly, click on the remaining two icons, clicking each time on the corresponding corner of the plane in the viewer.

Now click on the Texture Surface  icon on the lower left sector of the Texture Surface dialog panel. Click anywhere on the plane in the viewer. The JPEG picture will be displayed on the plane.



Several planes can be displayed on the viewer so that similarly corresponding JPEGs can be attached to each of them.

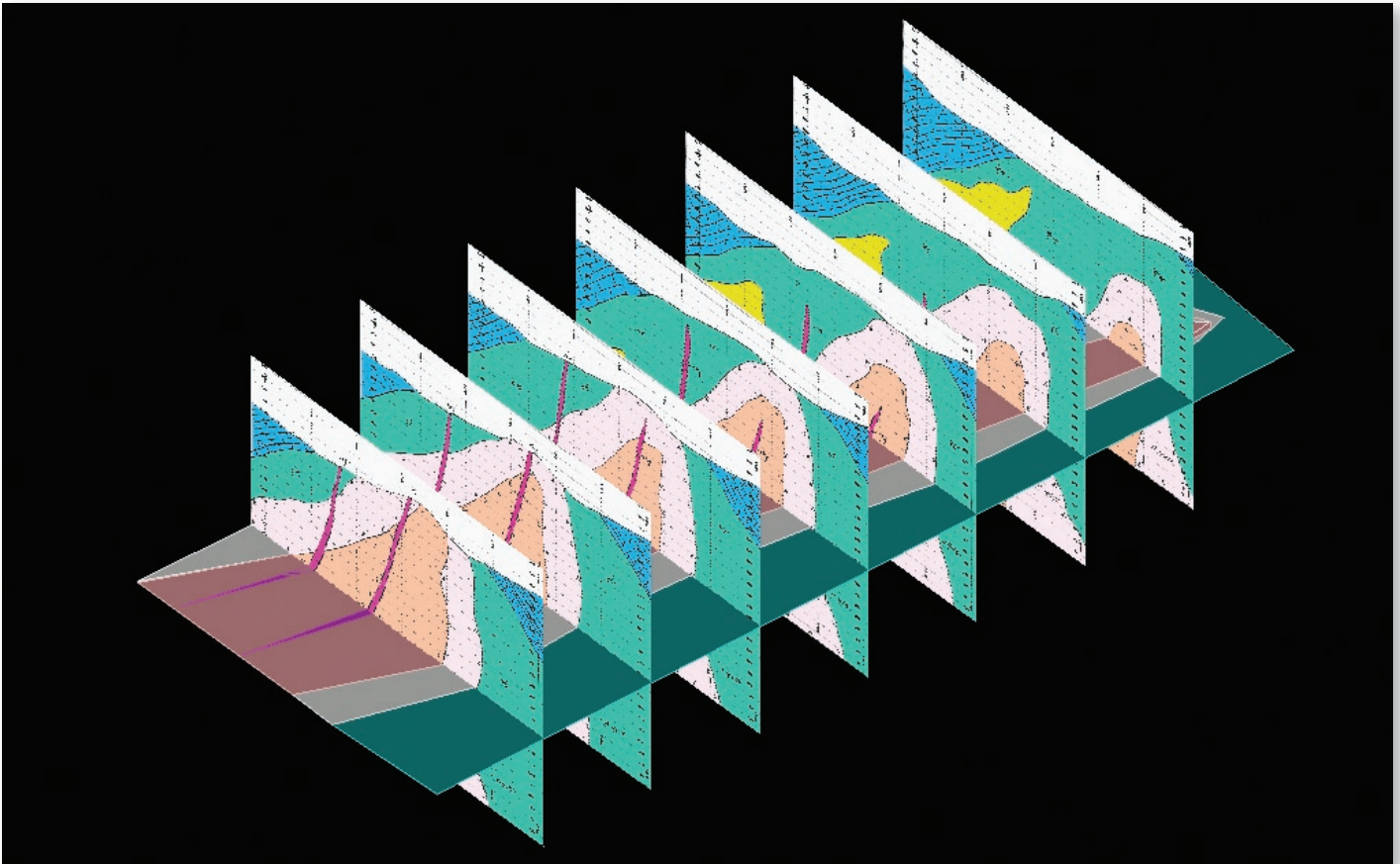


(continued on page 6)

(Applications of the Surface Texture Tool continued from page 5)

A Few Practical Applications

This is a basic application of this technique. Immediate use of the scanned field mapping sheets for direct, geologic interpretive work in MineSight®.



In the figure above, a level geologic map was built using the cross-sections generated by the Texture Surface Tool in MineSight®.

Additional uses include recovery and storage of old sections, mine maps, etc., making the availability of up to date pit mapping data in MineSight® an immediate reality. The applications are a function of the specific needs of an exploration group, or mining operation.

Implementing acQuire™ to this Process

The purpose of using the acQuire™ database in conjunction with this tool is to have the ability to store large amounts of graphic data such as old geologic maps, cross-sections, etc., in a common, readily accessible place. These data, because they have x, y, z and information associated with them, can then be brought into MineSight® at their precise locations.

A “Face Mapping” data entry system was designed in acQuire™ for the purpose of entering information relevant to this topic into the database. It will be discussed in detail in the workshops during our 2004 seminar.