

Current Affairs

A Window on Software Engineering

Customizing MineSight® Compass™ Menus

Custom procedures used only at your site can be put into a unique group in the standard menu to make them more easily accessible for you. This article reviews how to customize a menu with new groups and procedures, create a menu from “scratch” via ASCII import, and add procedures (or scripts) to the **Compass** dropdown list in MineSight® 3-D (MS3D).

Adding Custom Procedures to a Menu

Since the standard menu file, **compass.mnu** is not editable from the **%metlib%** subdirectory, copy it to a different name (or copy it locally) and then edit that copy. We recommend that you use a different name to prevent your modified menu from being overwritten when MineSight® is updated on your system. The example menu used in the article is named, **ABCMining.mnu**.

In MineSight® Compass™ (MSCompass), go to the **Menu** tab dialog and browse to find the newly created menu. Then click on the **Customize** button and the **Menu Editor** dialog will be displayed (Figure 1).

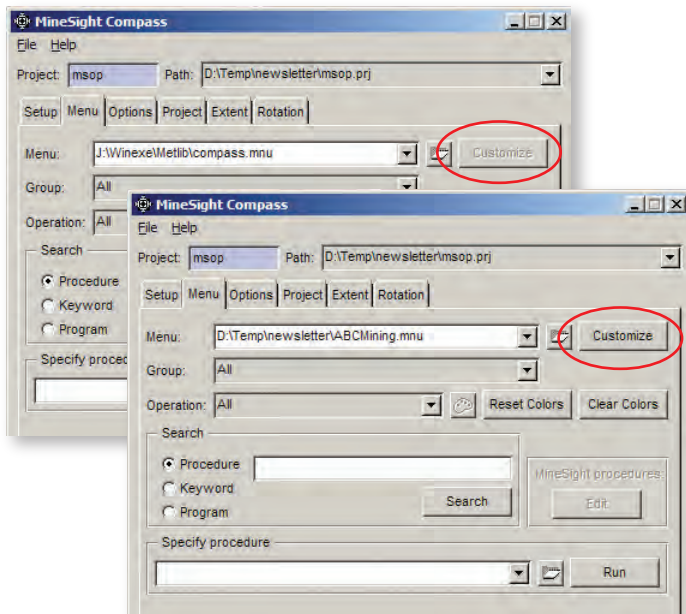


Figure 1 illustrates the **Menu** dialog in MSCompass. Notice the availability of the **Customize** button; it is unavailable when the standard **compass.mnu** file is in use from the **%metlib%** directory (menu in the background) but is available if the menu has either a different name (not **compass.mnu**) or is not located in the **%metlib%** directory.

There are three tab dialogs in the **Menu Editor** dialog: **Procedures**, **Group/operations**, and **Import/export**. New groups are added on the **Group/operations** page (Figure 2). Toggle **ON** the **Edit groups** option in the center of the dialog and in the **Groups** section, scroll down to the bottom of the list and add a new group. The new group will be added (saved) when you click on **Apply**. In the example shown, we've added a group called, **17- Custom**. To add a new operation, toggle **ON Edit operations** and the list of operations in this menu will be shown.

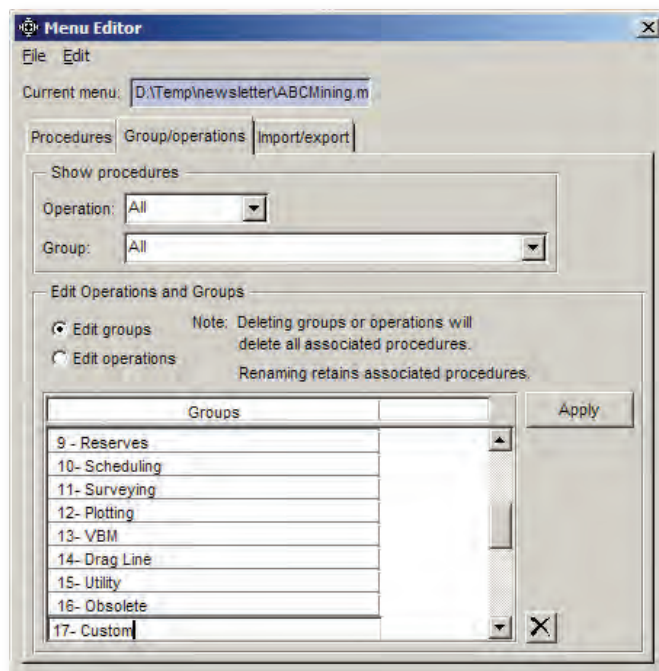


Figure 2 shows the **Group/operations** page in the **Menu Editor** dialog showing the newly added group called **17- Custom**.

Next, some procedures will be added to the new group; on the **Edit** menu, choose **Add procedure** (Figure 3).

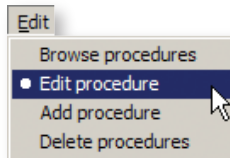


Figure 3 shows the **Edit** menu.

On the **Procedures** tab dialog, enter the name of the procedure to be added along with a label

(continued on page 4)

(Customizing MineSight® Compass™ Menus continued from page 3)

and a long description (Figure 4). Then choose the group of which this procedure should be a part and the operation with which to associate it. A procedure can be in multiple groups, but it can only be associated with one operation type. The label is the wording that will appear in the menu's list, and the long description is the wording displayed at the bottom of the MSCompass interface when you right-click on a procedure in the list (Figure 4). Note: **pload.dat** does not exist in standard MineSight® and is used here only as an example of a custom, site-specific procedure.

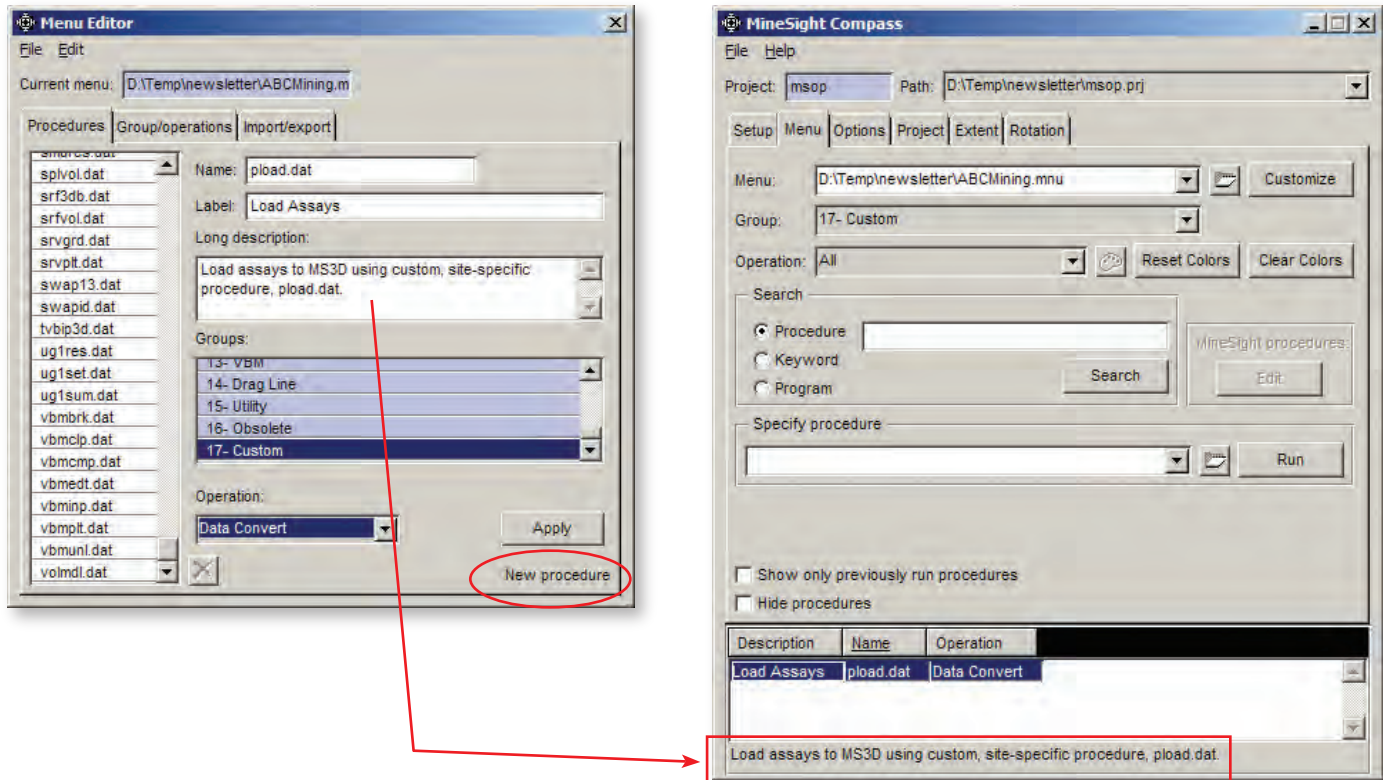



Figure 4 shows the **Procedures** tab dialog in the **Menu Editor** while adding a new procedure (on the left), and the resulting custom menu (on the right). When adding a new procedure, a notice is displayed in the lower right-hand corner (circled in red) and how the Long Description is displayed, outlined in blue.

If you make a mistake while entering a procedure, on the **Edit** menu, choose **Edit procedure**. Delete a procedure (or multiple procedures) by choosing **Delete procedures**, selecting the procedures from the procedure list and then clicking on the **Delete** button .

Finally, save the changes using **File | Save**.

Creating a Menu from “Scratch”

You can create a menu from an ASCII text file. In this case, to get the ASCII text file in the proper format, it's easiest to export an existing menu to ASCII and modify that file. The **Import/export** tab allows you to export the current menu as an ASCII file (Figure 5).

(Continued on page 5)

(Customizing MineSight® Compass™ Menus continued from page 4)

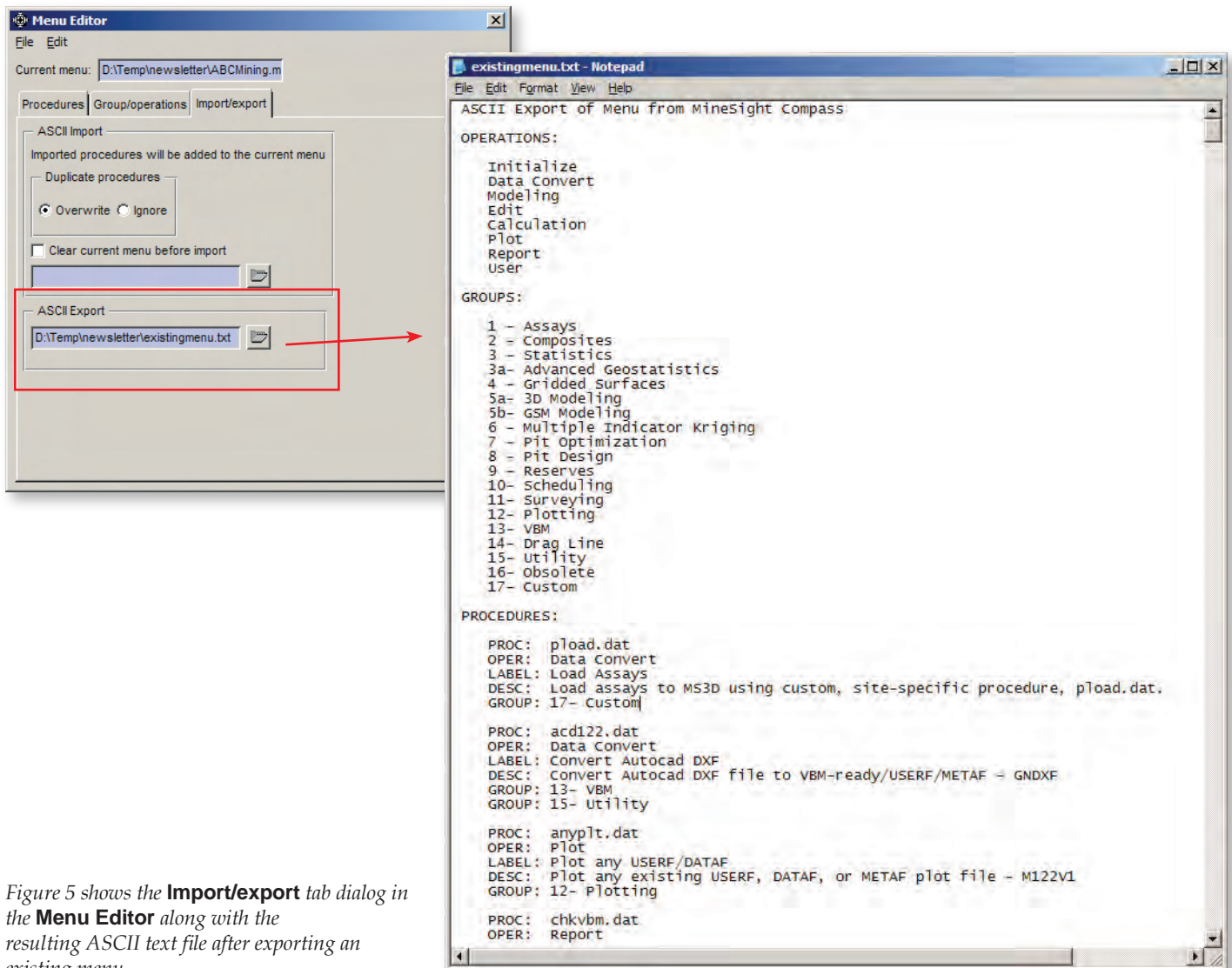


Figure 5 shows the **Import/export** tab dialog in the **Menu Editor** along with the resulting ASCII text file after exporting an existing menu.

Open the newly exported ASCII menu in a text editor (e.g., Notepad or keditw32) (Figure 5). The operation types are listed together at the top of the file, followed by the various groups that exist in this menu. The procedures are listed by procedure name, operation type, label, long description, and with which groups they occur. The procedures used in this menu are defined on lines starting with the keywords PROC, OPER, LABEL, DESC, and GROUP. As mentioned previously, a procedure can exist in multiple groups, but can only have one operation type.

After you've edited this file and are satisfied with its content and format, the file can be imported from the **Menu Editor | Import/export** tab dialog (Figure 6).

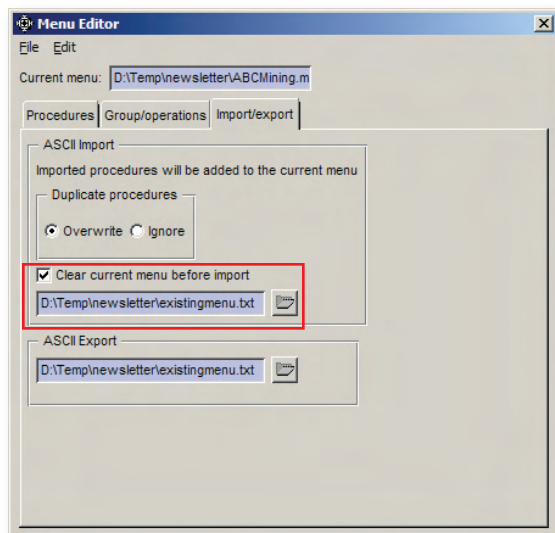


Figure 6 shows the **Import/export** dialog when importing an ASCII text menu file.

(continued on page 6)

(Customizing MineSight® Compass™ Menus continued from page 5)

The new menu will be created when you click on **File | Save** or can be saved to a new name using **File | Save As...**

MineSight® Procedures

As a shortcut, you can run procedures from directly inside MS3D without having to open MSCompass. However, this function is only available if you are running MSCompass from within MS3D and not as a standalone program.

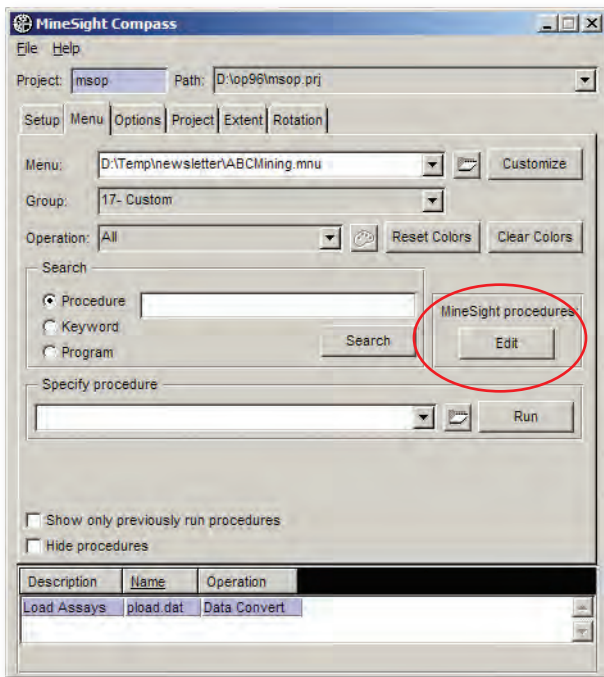



Figure 7 showing the MineSight® procedures option is available when running MSCompass from inside MS3D.

To add procedures to the MSCompass dropdown menu on the main MS3D menu, use the **Edit** button on the MSCompass **Menu** tab (Figure 7) and the MineSight® **Procedure Selector** window will be displayed (Figure 8). Select a procedure (or multiple procedures) from the procedure list along the right side of the dialog. Copy the selected procedure(s) to the MineSight® **Procedure** list using the left **Arrow** button  at the bottom of the window. Use the **Options** menu to choose how the procedure will appear on the dropdown menu in MS3D. In the example shown in Figure 8, we have copied one procedure to the list and its tag is based on the procedure label “Load Assays”.

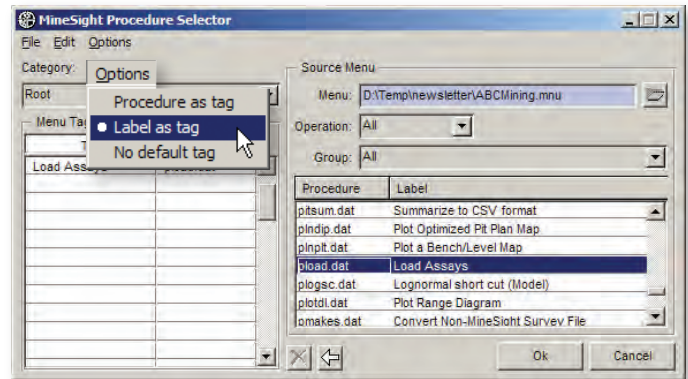


Figure 8 showing the MineSight® **Procedure Selector** dialog and the **Options** dropdown menu.

The menu supplying the procedure list can be changed. By default, it is the MSCompass menu currently in use. The menu can be filtered by **Group** and **Operation**. **Procedures** do not necessarily have to be selected from an existing menu; procedure names and descriptions can be entered directly into the table. This is another way to easily access your custom procedures.

You can create different **Categories** from the **File** menu. They will appear as branching dropdown menus under **Compass** on the main **MS3D Viewer** menu.

When you have finished adding procedures to the list along the left side of the MineSight® **Procedure Selector** menu, click on **Apply** to save the changes. The procedure(s) will then be added to the **Compass** dropdown menu in MS3D.

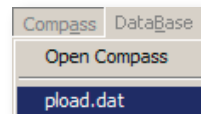


Figure 9 shows the one procedure that was added using the MineSight® **Procedure Selector**.

This topic is explained in further detail in the MSCompass section of the MineSight® 3-D Helpdoc. If you have further questions about menus and how to create or modify them, please contact Mintec Technical Support at ts@mintec.com.