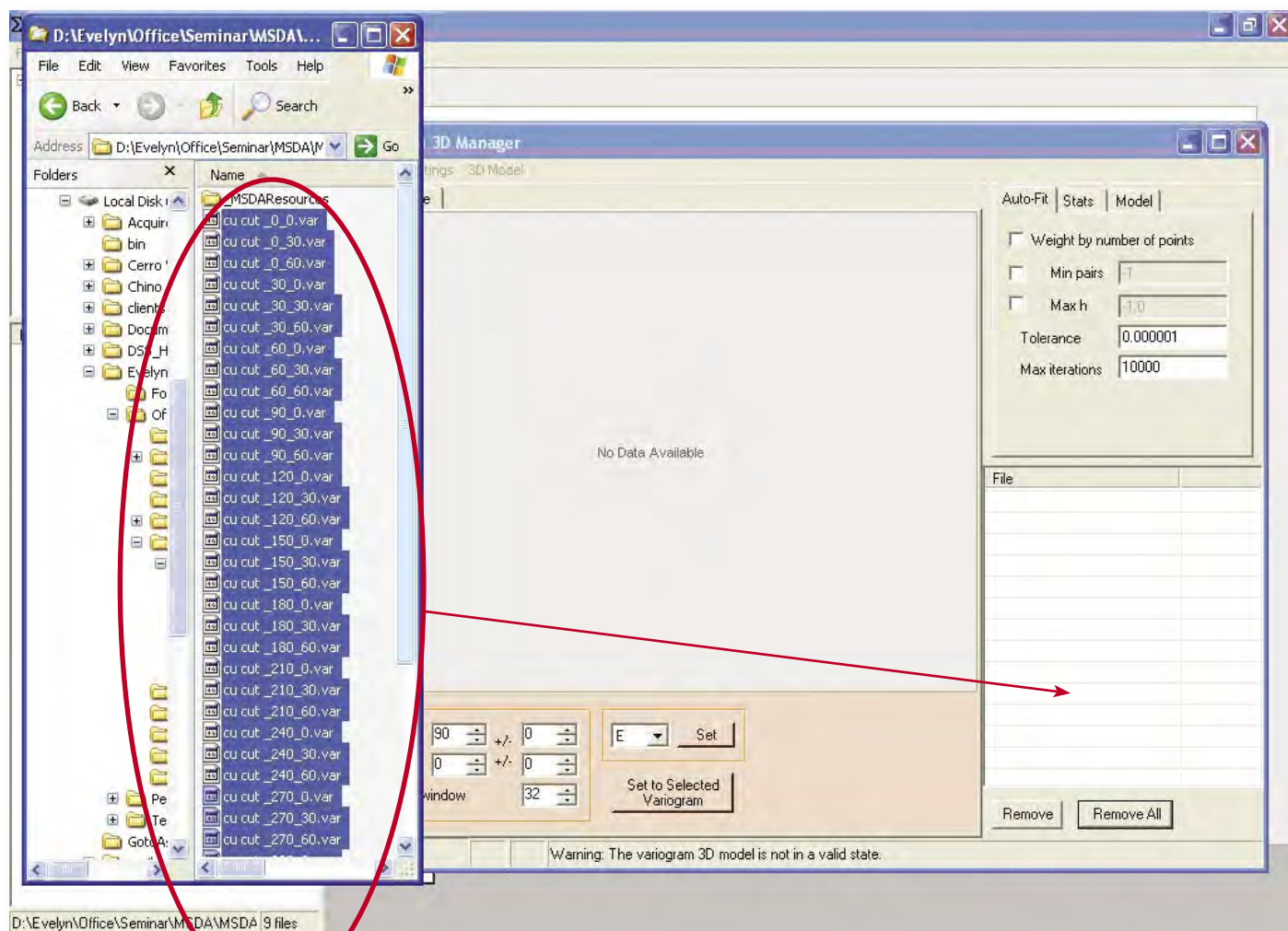


Another Tip from Tech Support: 2-D Variograms in the Variogram 3-D Manager

One question, which occurs with some regularity, is how to get 2-D variograms into the **Variogram 3-D Manager**. The following tip describes the steps necessary to accomplish the task :

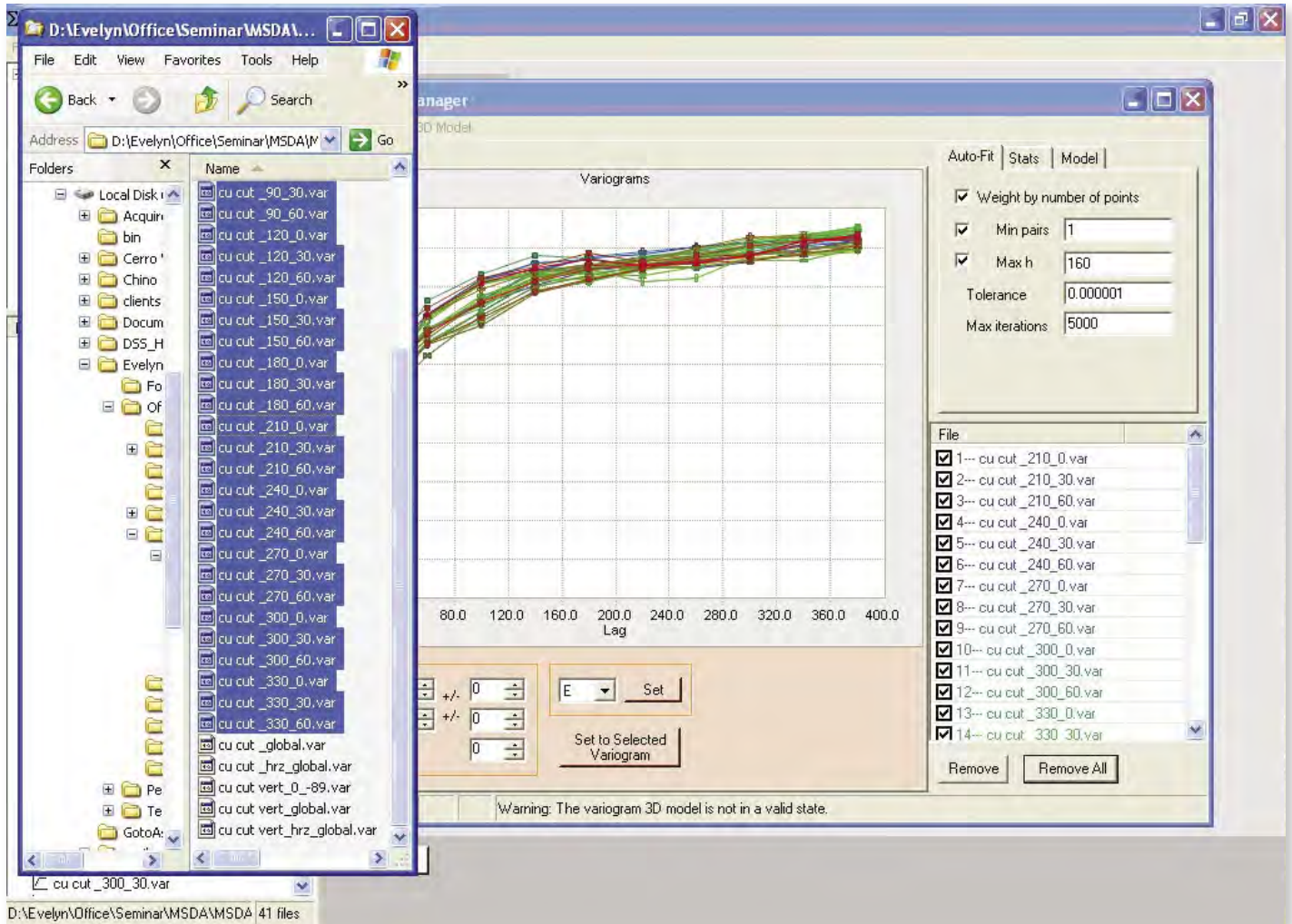
- 1) Find the 2-D variograms using Microsoft® Windows Explorer.
- 2) Click and drag the 2-D variograms from Microsoft® Windows Explorer into the **Variogram 3-D Manager**, as shown in the before and after pictures below and on the next page:



Before

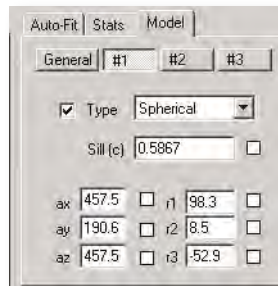
(continued on page 10)

(Tip of the Month continued from page 9)

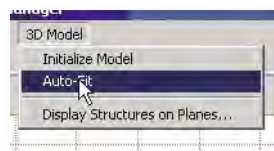


After

3) Go to the **Model** tab and select the variogram type (e.g., **Spherical**).



4) Now that you have dragged the variograms into the **Variogram 3-D Manager**, apply **Autofit** as follows: Go to **3-D Model** and click on **Autofit**.



You should now be able to view all your variograms in your 3-D Variogram Manager.