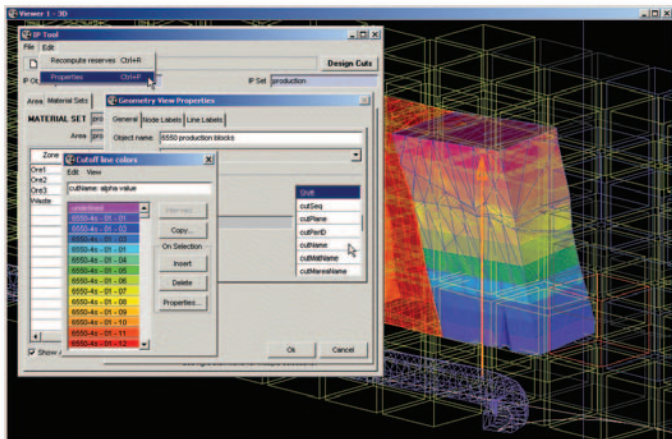


(Underground Applications of the MineSight® Interactive Planner Tool: Working with Solids continued from page 9)



	A	B	C
1	Cur Area	production area	
2	Cur Period	ctr1	
3	Material Set	production material	
4		Period Totals	Grand Totals
5	CU 0.00- 0.40		
6	Tons	3196	3196
7	Volume (BCY)	1403	1403
8	CU 0.40- 0.60		
9	Tons	1035	1035
10	Volume (BCY)	454	454
11	CU 0.60- 1.00		
12	Tons	3616	3616
13	Volume (BCY)	1587	1587
14	CU > 1.00		
15	Tons	0	0
16	Volume (BCY)	0	0
17	Totals	7847	7847
18	Tons	3444	3444
19	Volume (BCY)	0.44	0.44

To get the report for a cut, it must be opened on the **Cuts** tab; then the desired script is run from the **Scripts** tab. In this case, we've chosen the default **ip-accum.py** reporting script, displaying both the Cut Reserves

	A	B	C	D	E	F
1	Material:	Ore2				
2	Cutoff	>0.00	>0.40	>0.60	>1.00	Totals
3	Tons	0	0	5	0	5
4	Volume (BCY)	0	0	2	0	2
5	CU	0.00	0.00	0.75	0.00	0.75
6	Material:	Ore3				
7	Cutoff	>0.00	>0.40	>0.60	>1.00	Totals
8	Tons	0	264	231	0	495
9	Volume (BCY)	0	116	101	0	217
10	CU	0.00	0.41	0.75	0.00	0.57
11	Material:	Waste				
12	Cutoff	>0.00	Totals			
13	Tons	153	153			
14	Volume (BCY)	67				
15	CU	0.00	0.00			

and Cumulative Reserves reports shown above.

The preceding process is repeated for each of the sub-stopes to complete the generation of the planning cuts.

These two generic examples illustrate a number of options available in MineSight® IP for working with solids in the underground mining environment. The number of attributes and their ultimate uses are virtually unlimited, and reporting scripts can be easily modified to provide various formatting options. MINTEC, inc. remains committed to providing our clients with the most advanced and flexible mine planning tools in the industry, so if you would like additional information about this or any other MineSight® Tools, please contact MINTEC Technical Support.

## Tip of the month

### Using Non-orthogonal Grid Sets in the Autoslicer in MineSight® Interactive Planner

When using the Autoslicer with a non-orthogonal Grid Set, you may need to change the order of planes in the Grid Set to get a reasonable result. With the AutoSlicer, you always slice with the first plane (the way they are ordered in a Grid Set), then the remainder with the second plane, etc. The AutoSlicer needs to decide which side of a plane to create the slice, and which to keep as a "remainder" to be sliced by the next plane. This decision is based on the direction of the plane normal for each grid. For a vertical plane, if the plane is oriented East-West, the normal goes towards North. For sections oriented closer to North-South, the normal goes towards East. For a plane at a 45° azimuth, the Easting (x) component of normal (direction) vector is always made positive. Sort your planes to make sure their order follows the direction of the normal vector. Most likely you will have to rename the grids, using a name based on the \$count wildcard.