



Current Affairs

A Window on Software Engineering



License Keys and MineSight®

In order to run MineSight® programs you must have either individual local keys attached to your computer or else a network license. This article refers to the individual local keys, (“physical key dongles”) that are attached either to the parallel port or to the USB port on your computer.

With the release of the 2005 Update CD, Mintec, Inc. changed the licensing scheme for those who run MineSight® using “physical key dongles”. The “physical key dongles” issued with the 2005 Update CD are known as **Generation 1** keys. The “physical key dongles” issued with MineSight® prior to the 2005 Update are known as **Generation 0** keys.

The programs included on the 2005 Update CD are compiled to work with both the old and new keys. Existing old keys (Generation 0) can run old versions of the software as well as the latest versions of the software, **but only until March 31, 2006**. This provides a transition time of a few months to ensure that any old programs such as custom, site-specific user-subroutines are recompiled to use the new **Generation 1** keys. **Generation 1 keys cannot run old versions of the MineSight® software!**

Important Note: All future software updates will only be available for Generation 1 keys. All of the MineSight® program files that are available to be downloaded from the Mintec ftp site at www.mintec.com are compiled using the new licensing scheme.

If you have problems recompiling your user-subroutines, please contact Mintec Technical Support for assistance. Once your site has transitioned to using the Generation 1 keys, the old Generation 0 keys must be returned to Mintec.

The matrix of valid key/software combinations is:

Software	Old Key (Generation 0)	New Maintenance Key (Generation 1)	New MTA/Lease Key (Generation 1)
Pre-2005	OK	—	—
2005	Until March 31, 2006	OK with 2005 license	Until lease expiry date
Future	—	OK (after maintenance paid and key updated)	Until lease expiry date

For clients who wish to stay with existing versions of MineSight® (MineSight® 3-D, MineSight® Compass, Programs and Procedures), the 2005 Update CD includes zip files with MineSight® 3-D v3.40 and MineSight® 3-D v3.30 that were built under the new licensing scheme. Also included on the Update CD are the “2004.01.31” release and patched versions of MineSight® Programs and Procedures were built using the new licensing scheme.

MineSight® License Manager (MSLM)

The new keys are distributed with your company’s information, as well as the valid key modules that the key is enabled for on the 2005 update CD. When activation for next year’s software is required, or your licensing details change (such as a change of products/modules), Mintec will supply you with a new license configuration file. You will be able to apply this new license configuration to the key using the new MineSight® License Manager Program (MSLM).

You can also use the MSLM to upgrade your key by applying a new license configuration file. Site administrators can use the MSLM to load in multiple license configuration files, and have it apply the configuration across their network.

(continued on page 4)

(License Keys and MineSight® continued from page 3)

To run MSLM, Microsoft® .NET should already have been installed on your computer. This was probably done by the 2005 Update CD installation.

Information about your key can also be obtained from MSLM. Click on **Details** along the left side of the MSLM window (as shown below). The key module for which your key is licensed appears in bold, whereas the unavailable key modules are shown in grey. In the case shown, the key attached to the machine has a **Full License**, meaning all MineSight® programs can be run without restrictions (Figure 1).

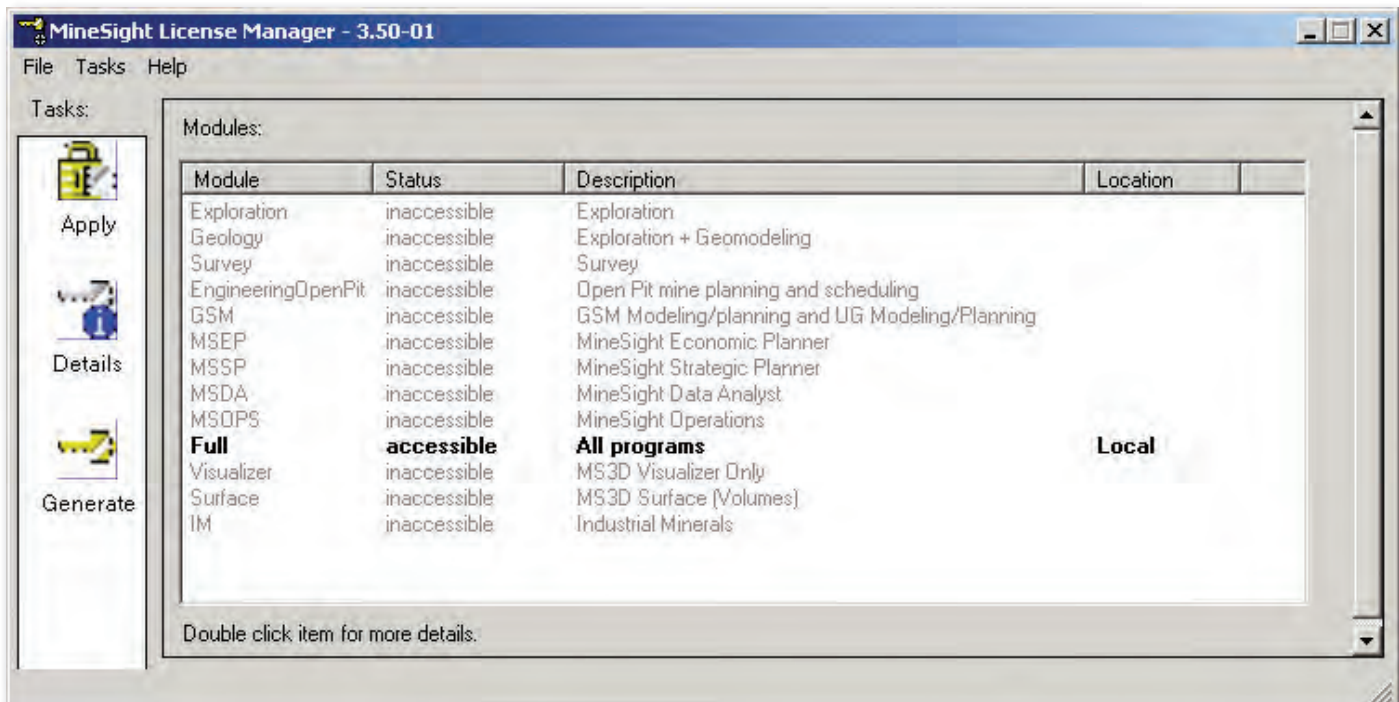


Figure 1. Details about the physical key dongle attached to the local computer. In this case, the key attached to the computer is a **Full License** module, meaning all MineSight® programs can be run without any restrictions.

As it states on the dialog, double-click on the available key (shown in bold) and more information about that key will be displayed (Figure 2). Such information includes a description of the license type and the list of MineSight® products and programs that are permitted to execute.

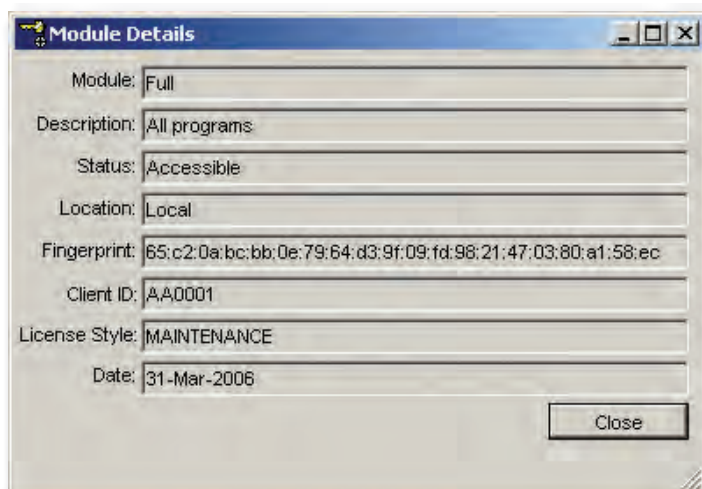


Figure 2. Shows details about the key, such as which module this key will allow to execute, Client ID, expiration date, etc.

Basically the MSLM is used to display details about the attached dongle, and to create/update the License Configuration File. Note, starting with the Generation 1 keys, all licensed MineSight® products will no longer require the Maintenance License File (`_minesightlicense`) or the License Key File as all required information is stored within the key itself. For more details and help with using MSLM, click on **Help | Help F1**, and html help will be displayed.

Remember that after March 31 (approximately 2 months from now), the Generation 0 keys will only work with MineSight® programs issued **before** the 2005 Update CD and will not work with the programs distributed on or since the 2005 Update. Programs now distributed by Mintec use a new licensing scheme, and future software updates, program changes, and any new MineSight® products, will only work with Generation 1 keys.

If you have any questions about the new key scheme, please contact Mintec Technical Support.