

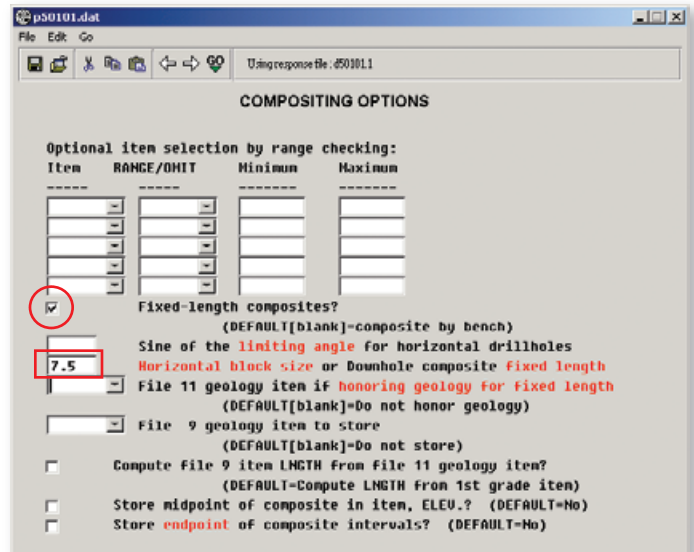
# Important Notice to Those Clients Using Fixed Length Compositing!

Several clients have recently reported problems with an enhancement to procedure P50101.dat which was not backwards compatible. MINTEC, inc. makes every effort to ensure all procedures enhancements are backwards compatible whenever possible.

In the current version of the procedure you must select the “fixed length” option via the tick box on the **Compositing Options** panel (circled in red) and provide a fixed length value (boxed in red). In the previous version it was sufficient to simply enter the fixed length value.

This enhancement was added to allow for the combination of defining the limiting angle and the horizontal length when using “bench compositing”. The option was not previously available in this procedure.

By adding the tick box, some automated multi-run setups may not incorporate the preferred option as previously configured. As with all model builds, we suggest clients review their response set(s) to ensure proper setup, especially those clients using automated model builds with multi-runs and the “fixed length” compositing option.



# Mintec Directory

## Mintec Contacts

<b>Accounting/Billing</b>	Diane Hanna Donna Ryan
<b>Consulting/Projects/ On-Site Training</b>	James Bowman Abdullah Arik
<b>Contracts</b>	Shirley Deslauriers
<b>Friendly Operators</b>	Aida Molina Maria Contreras
<b>Hotel/Travel Arrangements</b>	Deb St. Aubin
<b>MineSight® Sales</b>	Shirley Deslauriers
<b>Newsletter Editor</b>	Robert Ashbaugh
<b>Training Seminars/ Short Courses</b>	James Bowman

## How to Reach Us

### TELEPHONE NUMBERS

<b>Tucson Office (Main)</b> (520) 795-3891	<b>South Africa Office</b> 27-11-466-2942
<b>Calgary Office</b> (403) 256-4988	<b>Technical Support</b> (520) 326-1860
<b>Chile Office</b> 56-2-231-3591	<b>Toronto Office</b> (905) 824-7990
<b>Peru Office</b> 51-1-434-2382	<b>Vancouver Office</b> (604) 681-4547

**Tucson Office (Main)**  
3544 East Fort Lowell Rd.  
Tucson, AZ 85716-1705 USA  
Fax: (520) 325-2568  
E-mail: [market@mintec.com](mailto:market@mintec.com)  
Website: <http://www.mintec.com>  
or <ftp://ftp.mintec.com>

## Toll-Free Technical Support Telephone Numbers

<b>Canada:</b>	1.800.548.6337
<b>Chile:</b>	123.0020.2154
<b>Mexico:</b>	001.800.548.6337
<b>Peru:</b>	0800.50000 then request 0800.533.6337
<b>South Africa:</b>	0800-996052
<b>USA:</b>	1.800.533.6337

**Technical Support E-mail**  
[ts@mintec.com](mailto:ts@mintec.com)

**Training E-mail**  
[train@mintec.com](mailto:train@mintec.com)

**Technical Support Fax**  
(520) 326-1008

**Staffed Tech Support Hours**  
Mon - Fri: 6:00am - 6:00pm (MST)  
Sat: 8:00am - 5:00pm

*Staff is always on-call via pager during hours not listed.*