



Current Affairs

A Window on Software Engineering

Find & Clean-up Bad Resource Files

Occasionally, MineSight® 2 resource files can get corrupted. Certain corrupted files will cause MineSight® 2 to crash when you try to start up the program. If you have a large project with numerous resource (.msr) files, finding those bad files can be a very tedious process.

We have a new program to help locate those bad files—MS2ResTest.exe. This program will find the files in a directory structure and rename any bad resource files it finds. The user interface to this program is called MS2ResClean.exe (shown in Figure 1). Be sure to backup your project before running these programs.

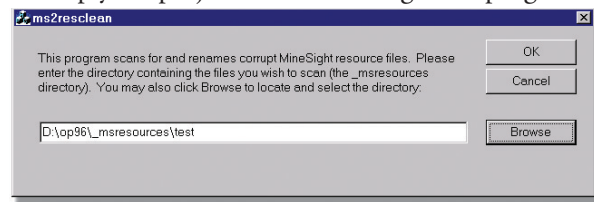


Figure 1.

Select the directory you want scanned for corrupt resource files. Then click OK. If any corrupt resource files are found in the selected directory, the files are renamed with a “.msr_corrupt” extension, and a notice is posted to let you know that corrupt files were found (Figure 2).

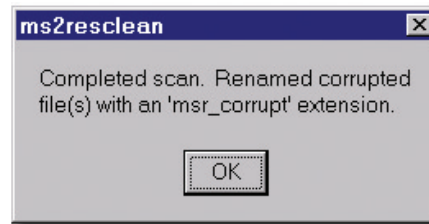


Figure 2.

When MS2ResClean is executed, a log file called “ms2restest.log” is written to the directory you are scanning. This is an ASCII file that lists all the files scanned.

When the program completes and no corrupt resource files are found, the following message is displayed (Figure 3).

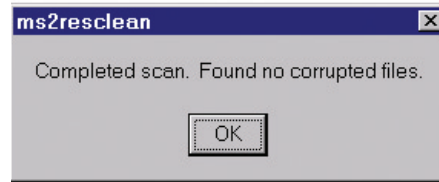


Figure 3.

MS2ResClean and MS2ResTest are available at <ftp://ftp.mintec.com>.

CONTINUING EDUCATION

educación continúa



MineSight® for Engineers – Surface – Level 1

MineSight® for Engineers – Surface – Level 1 is designed as the introductory course to MineSight® tools through the MineSight® 2 and MineSight® Compass™ interfaces for surface mining engineers. Students will begin with an overview of MineSight® project setup, followed by a review of the tools within MineSight® 2. The course will then cover the tools used to optimize a pit, followed by pit design, long-term scheduling, and short-range planning. The new MineSight® 2 Interactive Planning functions will be used exclusively for short-range planning.

MineSight® for Engineers – Surface – Level 2

This course will move through the same functions as the Level 1 course, but in more detail. The course is designed for students who are already familiar with MineSight® projects and the MineSight® 2 interfaces, as those concepts will not be reviewed. Students will focus in detail on optimizing a pit, pit design, long-term scheduling, and short-range planning. The new MineSight® 2 Interactive Planning functions will be used exclusively for short-range planning.

(For schedules of these and other classes, see page 10.)