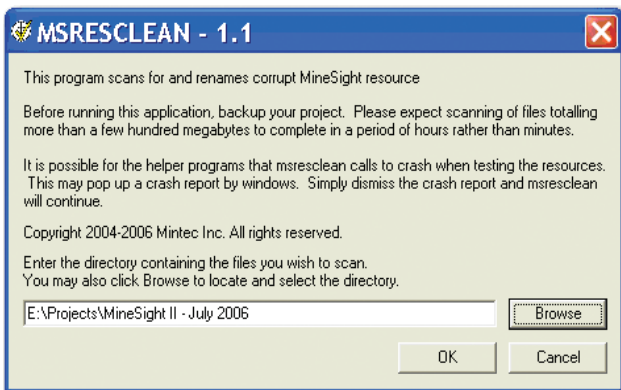


Tip of the Month:

MineSight® Project Audit to List Objects and Flag Corrupt Objects

Like every other tool that is used everyday, MineSight® needs periodic tune ups and preventive maintenance. Since the objects created in a MineSight® project belong to the company, it is a good idea to get a list of the objects to find out how many you have and where they are. This is also a method of checking your organizational style.

Mintec provides a tool, **MSRESCLEAN** which creates a list of all the objects in a project and checks each of them for corruption. The tool consists of two programs working together, **msresclean.exe**, the front end and **msrestest.exe**, the engine program. The programs create logging files named **msresclean.log** and **msrestest.log**. The **msrestest.log** file has the complete listing of all the objects, including the corrupt files. The **msresclean.log** file has a list of all the objects that were corrupt. **Msresclean.exe** tests all MineSight® resource files: the ***.msm** and ***.msr** files in a project folder and all of the subfolders, as well as **dialogs.ptf** files. **MSRESCLEAN** should be started in the project folder directory, not in the **_msresources** folder.



MineSight® 3-D works with ***.msr** files and creates ***.msr%** as backups. The ***.msr%** are

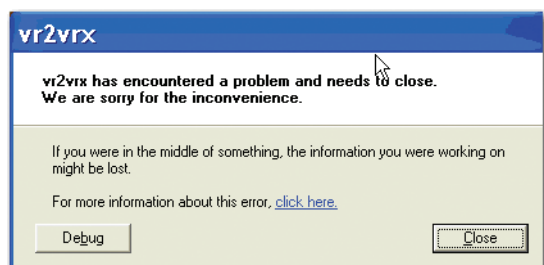
not shown in the **Data Manager** lists. If a MineSight® object is corrupt, **msrestest.exe** will change the extension from ***.msr** to ***.msr_corrupt**. This will make the object invisible to MineSight® 3-D. If the backup file exists and is corrupt, it will also be renamed, to ***.msr%_corrupt** and you will have to recreate the object. If the backup file is not corrupt, you can use Microsoft® Explorer to change the extension from ***.msr%** to ***.msr** and the object will be visible in **Data Manager**. While **msrestest.exe** will rename the corrupt object so that it will not be displayed or checked by MineSight®, it does not remove the file. To remove them, you will need to use Microsoft® Explorer, set the display options to show details and sort by type. Then select all the ***.msr_corrupt** and ***.msr%_corrupt** files and delete them.

MineSight® objects can become corrupt for a number of reasons that can occur during the normal work process. Electrical power fluctuations during the opening/saving of an object, imperfections on the hard disk surfaces, errors in copying the file to/from a network location, and failing network infrastructure are all rare but real risks. Periodic auditing with **msresclean.exe** to check all your MineSight® objects is the preferred method of finding these errors.

Version 1.1 of **msresclean.exe** has been enhanced to eliminate the twin problems of 'false positives' and 'false negatives', that were possible with the earlier version. A 'false negative' results when a corrupt file was judged okay and a 'false positive' when a functioning object was judged corrupt. The helper programs used to test the resource files may fail during the resource testing process. In this case, the following dialog window may appear:

(continued on page 13)

(MineSight® Project Audit to List Objects and Flag Corrupt Objects continued from page 12)



If you encounter the above window during your audit process, simply click on the **Close** button. The dialog window will close and **msresclean.exe** will continue on with the audit. If corrupt files were encountered during the testing process, **MSRESCLEAN** will post a notice and display the **msresclean.log** file which lists all the corrupt objects found.

Below is an example of an **msresclean.log** file:

```
E:\Projects\csamp\_msresources\dialogs.ptf IS CORRUPT
E:\Projects\MineSight II - July 2006\_msresources\0001 junk\acq.msr IS CORRUPT
E:\Projects\MineSight II - July 2006\_msresources\0001 junk\acq.msr% IS CORRUPT
E:\Projects\abc_mining\_msresources\DH\acq.msr IS CORRUPT
E:\Projects\my_project\_msresources\DDH\acq.msr IS CORRUPT
E:\Projects\my_project\_msresources\DDH\acq.msr% IS CORRUPT
E:\Projects\my_project\_msresources\DDH\D.S. 14.msr IS CORRUPT
E:\Projects\my_project\_msresources\DDH\log.msr% IS CORRUPT
E:\Projects\my_project\_msresources\resources2006\LAB14\LAB14.msr IS CORRUPT
```

The **msrestest.log** file can be used to categorize the objects in a MineSight® project.

```
E:\Projects\01 Minesight_MSOP\01demo.msm IS OK
E:\Projects\01 Minesight_MSOP\AutoSlicer.msm IS OK
E:\Projects\01 Minesight_MSOP\BlockModelCoding.msm IS OK
E:\Projects\01 Minesight_MSOP\Daily-Update.msm IS OK
E:\Projects\01 Minesight_MSOP\Deforma.msm IS OK
E:\Projects\01 Minesight_MSOP\EllipseInterpolation.msm IS OK
E:\Projects\01 Minesight_MSOP\GradeShell.msm IS OK
E:\Projects\01 Minesight_MSOP\ImportPolygons.msm IS OK
E:\Projects\01 Minesight_MSOP\IPToolExample.msm IS OK
E:\Projects\01 Minesight_MSOP\Linking.msm IS OK
```

To summarize, the **MSRESCLEAN** tool provides auditing and flagging of corrupt provide auditing and flagging of corrupt MineSight® objects and should be a part of the routine project maintenance plan.