

TIPS
from



Tech Support

3rd Party Graphics and MineSight®

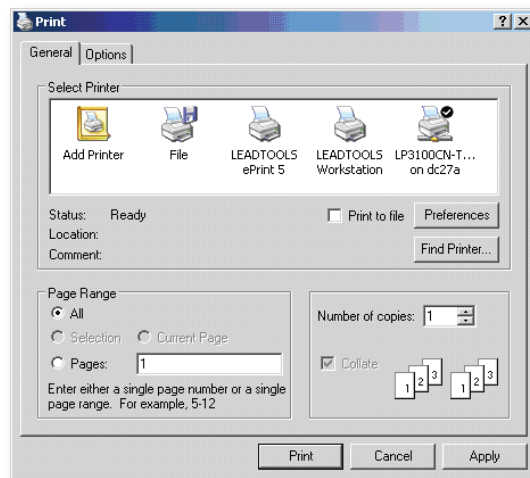
Many clients have expressed an interest in being able to imbed documents in MineSight® 3-D such as Microsoft® Excel spreadsheets, PDF Documents, and JPEG Files among others. It would then be possible to plot these imbedded objects along side project data.

There are 3rd Party Graphics Utilities, which are both inexpensive and very flexible for file conversion and manipulation, which are ideal for just such a task. One example of such software is LEADTOOLS ePrint 5. Mintec, Inc. has tested this software and this article highlights some of the most useful functions as they relate to plotting and imbedding graphics in MineSight®.



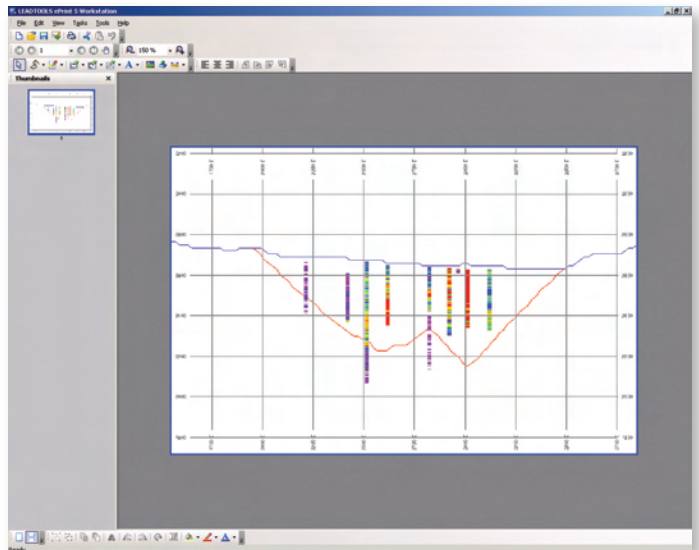
LEADTOOLS ePrint 5 is a file conversion solution, which allows you to convert your documents or images from **any** Microsoft® Windows application to over 150 file types including PDF, DOC, HTML, TXT, Multi-page TIFF, JPEG, GIF, PNG, DXF, and many more. This is ideal for imbedding a variety of files into MineSight® as well as providing many formats compatible for inclusion in MineSight® plots.

ePrint simply sets up two virtual printers in your printer list. One is a direct file conversion utility and the other is a “workstation” where you can manipulate your file by adding highlights, drawing on it, or adding labels and text before saving to a preferred file format.



When you select the LEADTOOLS ePrint 5 printer you will be prompted to choose the file type and can then configure its output parameters.

For imbedding files into MineSight®, we found the TIFF format keeps the highest resolution and looks great!

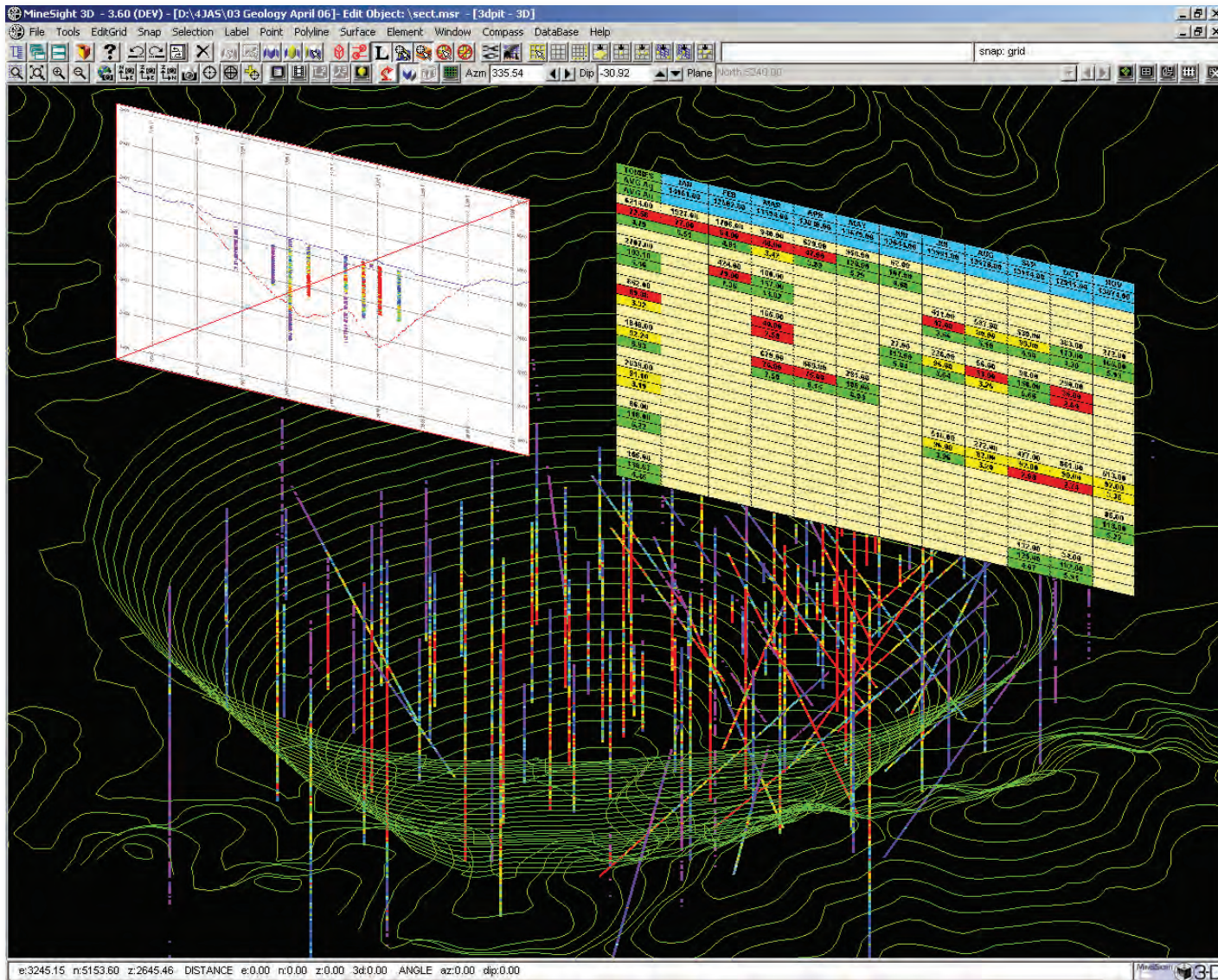


(continued on page 9)

September 2006

(3rd Party Graphics and MineSight® continued from page 8)

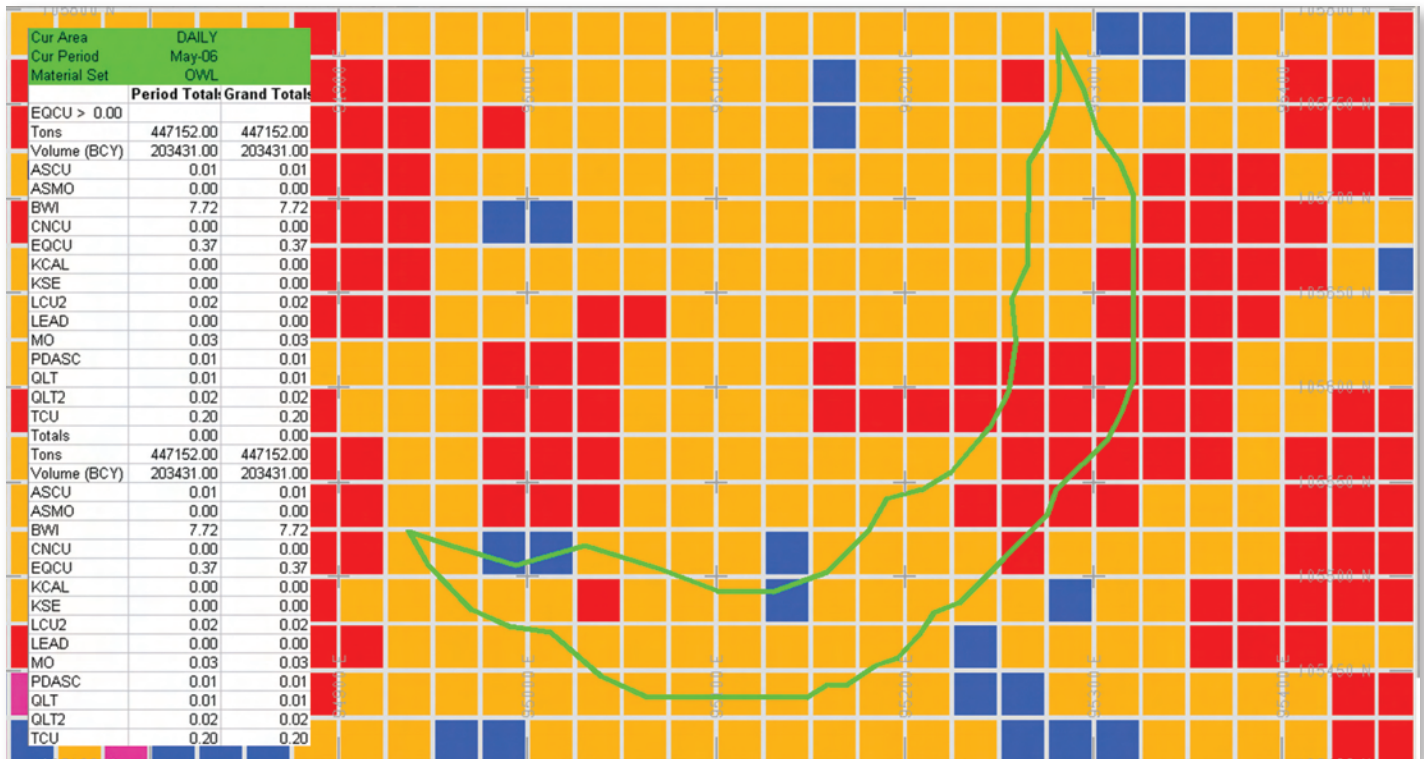
The “workstation” is a simple to use editing program, which allows basic editing and the same conversion of your document into a variety of formats. This is ideal for presenting data from MineSight® along side pictures, charts, tables, or any other documents converted through this utility.



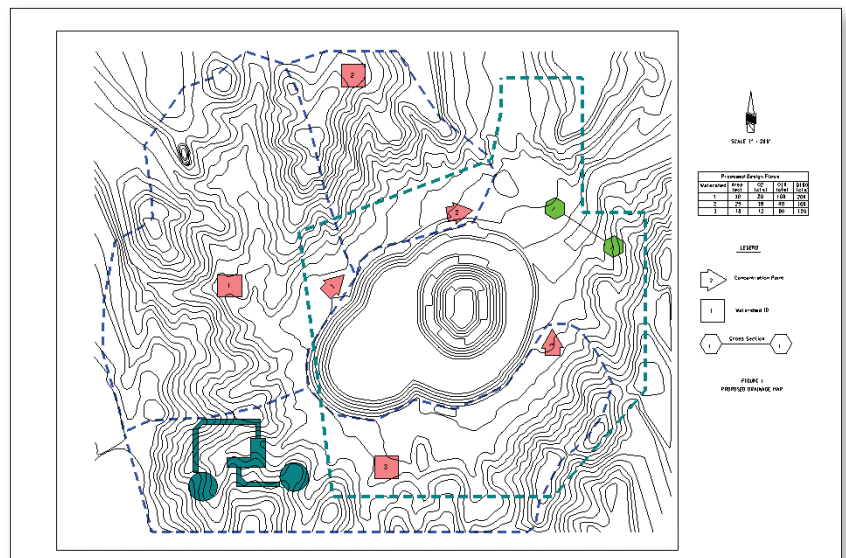
Using the **Texture Surface Tool** in MineSight®, these files can be imbedded into your project in a variety of orientations. They can then be plotted or used for presentation purposes.

(continued on page 10)

(3rd Party Graphics and MineSight® continued from page 9)



The upcoming release of MineSight® v.3.60 will make this even more accessible by including a Texture Surface “Memory”. That is, the imbedded graphics file will stay on the surface even after closing the surface and reopening it.



Another useful function of this software package is the ability to convert any MineSight® Plot into an electronic format. Plots can be stored as PDFs, JPEGs, TIFFs, Vector Formats such as DXFs and a wide number of other file formats, making it easier to send information electronically.

You can obtain more information and download the trial version of ePrint from: <http://www.leadtools.com>. If you need additional information, or help with this tool, contact Mintec Technical Support.